

MicNOVA Portfolio Discussion

October 19, 2017

Manifest Investing

Portfolio Sorted by PAR

10/19/2017

Company	Symbol	Shares	Price	Value	% of Total	Growth	Proj P/E	Proj Yield	Fin Str	EPS Stab	Qty	PAR [▲]
CVS Health	CVS	35.00	\$74.10	\$2,593.50	3.4%	7.5%	14.0	2.3%	99%	97	95	16.4%
Alphabet (Google)	GOOG	4.00	\$992.81	\$3,971.24	5.2%	14.5%	27.0	0.0%	99%	90	95	12.4%
Gentex	GNTX	190.00	\$20.46	\$3,887.40	5.1%	9.8%	15.0	1.7%	96%	78	99	11.7%
Dycom Industries	DY	55.00	\$85.06	\$4,678.30	6.1%	8.0%	15.0	0.0%	50%	41	57	11.1%
Cognizant Technology	CTSH	60.00	\$73.94	\$4,436.40	5.8%	10.2%	16.0	1.7%	100%	97	97	11.1%
Air Lease*	AL	90.00	\$43.43	\$3,908.70	5.1%	12.0%	10.0	0.5%	16%	88	81	10.5%
LKQ Corp	LKQ	100.00	\$37.54	\$3,754.00	4.9%	12.2%	16.0	0.0%	83%	97	96	10.3%
Abbvie	ABBV	71.00	\$96.04	\$6,818.84	8.9%	9.2%	14.0	3.1%	97%	98	87	9.1%
Visa Inc.	V	30.00	\$107.80	\$3,234.00	4.2%	11.4%	27.0	0.9%	95%	98	100	8.3%
Bank of the Ozarks*	OZRK	70.00	\$45.66	\$3,196.20	4.2%	6.9%	15.0	1.3%	76%	45	61	8.1%
Apple	AAPL	35.00	\$159.76	\$5,591.60	7.3%	7.4%	13.0	2.1%	91%	91	99	7.9%
IPG Photonics	IPGP	30.00	\$203.00	\$6,090.00	7.9%	15.1%	22.0	0.0%	96%	66	100	7.1%
Microsoft	MSFT	50.00	\$77.61	\$3,880.50	5.1%	6.3%	23.0	2.7%	99%	73	85	6.9%
Cerner	CERN	25.00	\$72.69	\$1,817.25	2.4%	7.9%	24.0	0.0%	97%	92	96	6.5%
Price T. Rowe	TROW	50.00	\$95.76	\$4,788.00	6.2%	6.9%	13.0	2.7%	94%	84	97	5.7%
CH Robinson	CHRW	52.00	\$77.34	\$4,021.68	5.2%	4.8%	18.0	2.0%	96%	84	77	5.2%
Berkshire Hathaway B	BRK-B	25.00	\$187.85	\$4,696.25	6.1%	6.2%	17.8	0.0%	95%	81	82	4.6%
Cash				\$5,274.14	6.9%			0.7%				0.7%
Averages				\$76,638.00		9.3%	17.2	1.3%	87%	82	88.5	8.2%

Portfolio Sorted by Value

10/19/2017

Company	Symbol	Shares	Price	Value ▲	% of Total	Growth	Proj P/E	Proj Yield	Fin Str	EPS Stab	Qty	PAR
Abbvie	ABBV	71.00	\$96.04	\$6,818.84	8.9%	9.2%	14.0	3.1%	97%	98	87	9.1%
IPG Photonics	IPGP	30.00	\$203.00	\$6,090.00	7.9%	15.1%	22.0	0.0%	96%	66	100	7.1%
Apple	AAPL	35.00	\$159.76	\$5,591.60	7.3%	7.4%	13.0	2.1%	91%	91	99	7.9%
Price T. Rowe	TROW	50.00	\$95.76	\$4,788.00	6.2%	6.9%	13.0	2.7%	94%	84	97	5.7%
Berkshire Hathaway B	BRK-B	25.00	\$187.85	\$4,696.25	6.1%	6.2%	17.8	0.0%	95%	81	82	4.6%
Dycom Industries	DY	55.00	\$85.06	\$4,678.30	6.1%	8.0%	15.0	0.0%	50%	41	57	11.1%
Cognizant Technology	CTSH	60.00	\$73.94	\$4,436.40	5.8%	10.2%	16.0	1.7%	100%	97	97	11.1%
CH Robinson	CHRW	52.00	\$77.34	\$4,021.68	5.2%	4.8%	18.0	2.0%	96%	84	77	5.2%
Alphabet (Google)	GOOG	4.00	\$992.81	\$3,971.24	5.2%	14.5%	27.0	0.0%	99%	90	95	12.4%
Air Lease*	AL	90.00	\$43.43	\$3,908.70	5.1%	12.0%	10.0	0.5%	16%	88	81	10.5%
Gentex	GNTX	190.00	\$20.46	\$3,887.40	5.1%	9.8%	15.0	1.7%	96%	78	99	11.7%
Microsoft	MSFT	50.00	\$77.61	\$3,880.50	5.1%	6.3%	23.0	2.7%	99%	73	85	6.9%
LKQ Corp	LKQ	100.00	\$37.54	\$3,754.00	4.9%	12.2%	16.0	0.0%	83%	97	96	10.3%
Visa Inc.	V	30.00	\$107.80	\$3,234.00	4.2%	11.4%	27.0	0.9%	95%	98	100	8.3%
Bank of the Ozarks*	OZRK	70.00	\$45.66	\$3,196.20	4.2%	6.9%	15.0	1.3%	76%	45	61	8.1%
CVS Health	CVS	35.00	\$74.10	\$2,593.50	3.4%	7.5%	14.0	2.3%	99%	97	95	16.4%
Cerner	CERN	25.00	\$72.69	\$1,817.25	2.4%	7.9%	24.0	0.0%	97%	92	96	6.5%
Cash				\$5,274.14	6.9%			0.7%				0.7%
Averages				\$76,638.00		9.3%	17.2	1.3%	87%	82	88.5	8.2%

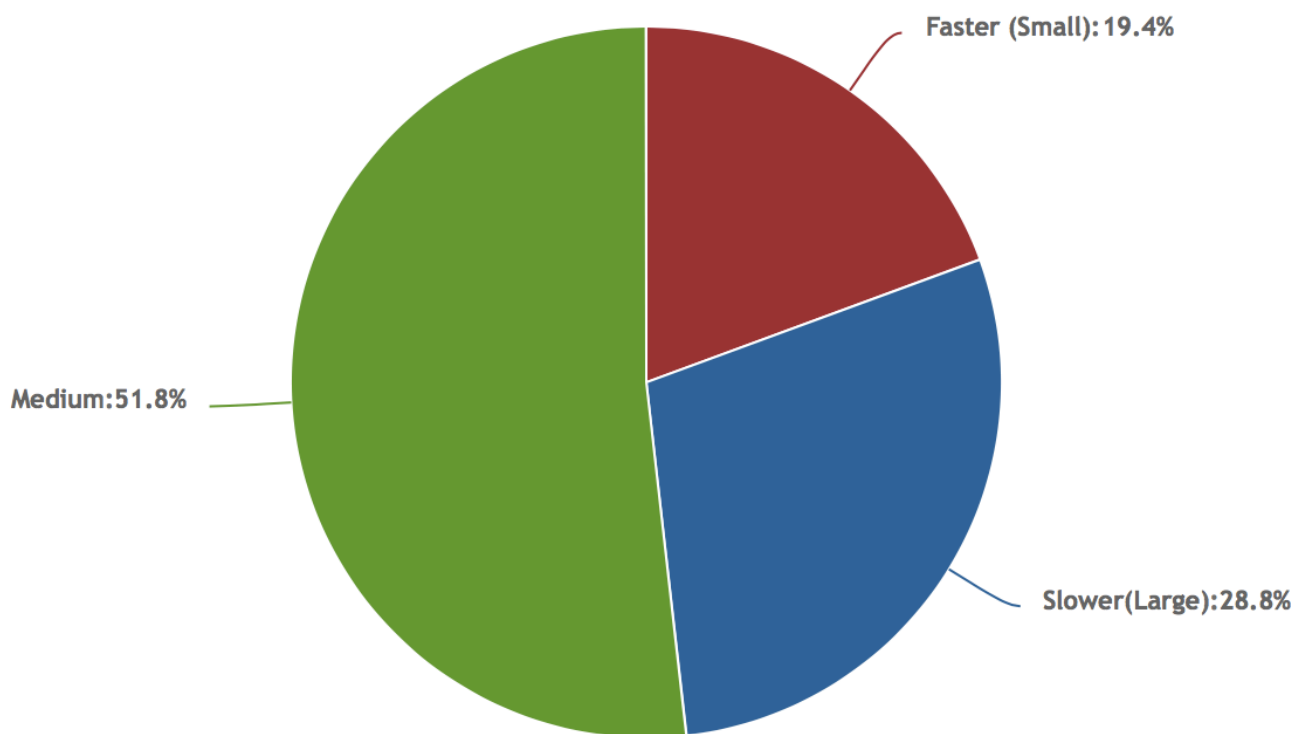
Portfolio Sorted by Growth

10/19/2017

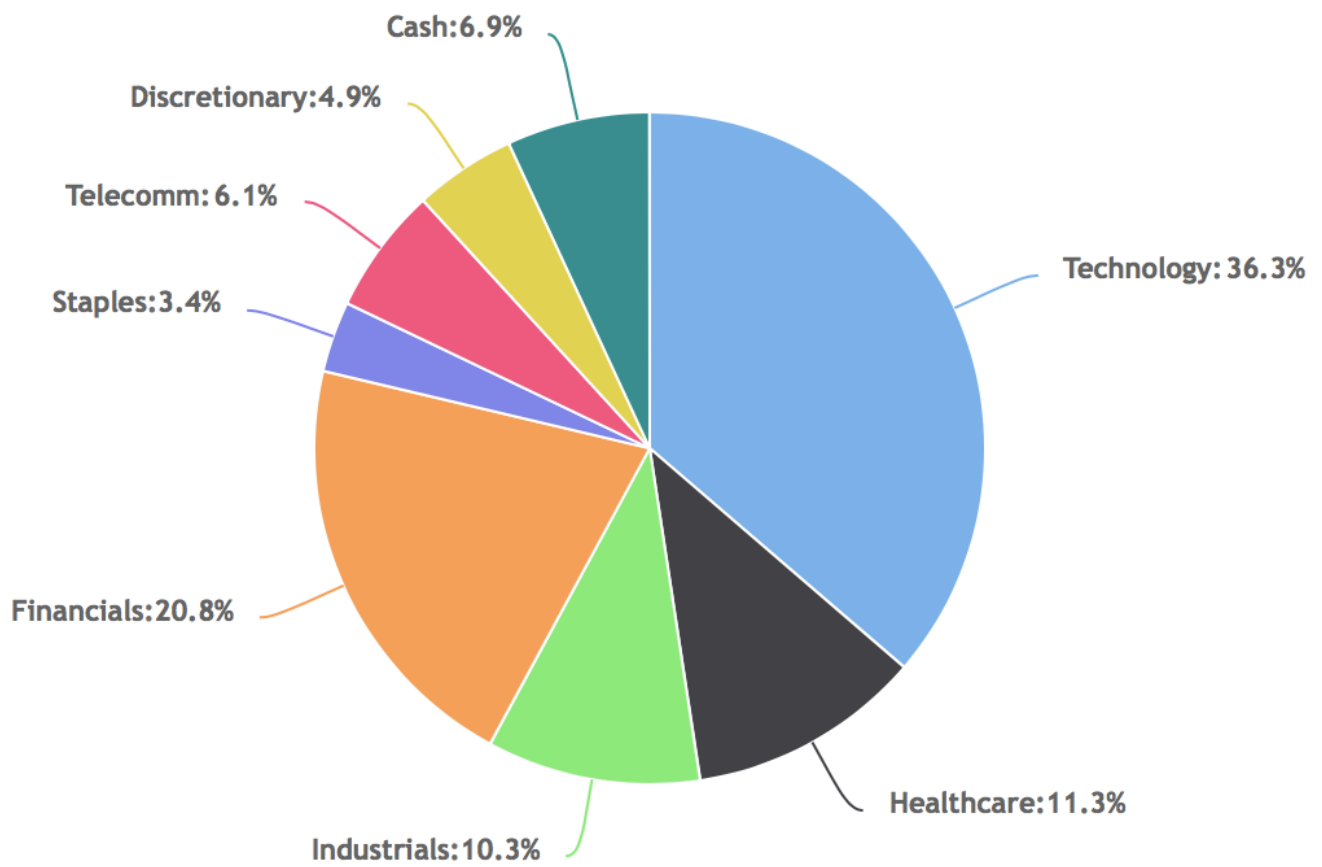
Company	Symbol	Shares	Price	Value	% of Total	Growth [▲]	Proj P/E	Proj Yield	Fin Str	EPS Stab	Qty	PAR
IPG Photonics	IPGP	30.00	\$203.00	\$6,090.00	7.9%	15.1%	22.0	0.0%	96%	66	100	7.1%
Alphabet (Google)	GOOG	4.00	\$992.81	\$3,971.24	5.2%	14.5%	27.0	0.0%	99%	90	95	12.4%
LKQ Corp	LKQ	100.00	\$37.54	\$3,754.00	4.9%	12.2%	16.0	0.0%	83%	97	96	10.3%
Air Lease*	AL	90.00	\$43.43	\$3,908.70	5.1%	12.0%	10.0	0.5%	16%	88	81	10.5%
Visa Inc.	V	30.00	\$107.80	\$3,234.00	4.2%	11.4%	27.0	0.9%	95%	98	100	8.3%
Cognizant Technology	CTSH	60.00	\$73.94	\$4,436.40	5.8%	10.2%	16.0	1.7%	100%	97	97	11.1%
Gentex	GNTX	190.00	\$20.46	\$3,887.40	5.1%	9.8%	15.0	1.7%	96%	78	99	11.7%
Abbvie	ABBV	71.00	\$96.04	\$6,818.84	8.9%	9.2%	14.0	3.1%	97%	98	87	9.1%
Dycom Industries	DY	55.00	\$85.06	\$4,678.30	6.1%	8.0%	15.0	0.0%	50%	41	57	11.1%
Cerner	CERN	25.00	\$72.69	\$1,817.25	2.4%	7.9%	24.0	0.0%	97%	92	96	6.5%
CVS Health	CVS	35.00	\$74.10	\$2,593.50	3.4%	7.5%	14.0	2.3%	99%	97	95	16.4%
Apple	AAPL	35.00	\$159.76	\$5,591.60	7.3%	7.4%	13.0	2.1%	91%	91	99	7.9%
Price T. Rowe	TROW	50.00	\$95.76	\$4,788.00	6.2%	6.9%	13.0	2.7%	94%	84	97	5.7%
Bank of the Ozarks*	OZRK	70.00	\$45.66	\$3,196.20	4.2%	6.9%	15.0	1.3%	76%	45	61	8.1%
Microsoft	MSFT	50.00	\$77.61	\$3,880.50	5.1%	6.3%	23.0	2.7%	99%	73	85	6.9%
Berkshire Hathaway B	BRK-B	25.00	\$187.85	\$4,696.25	6.1%	6.2%	17.8	0.0%	95%	81	82	4.6%
CH Robinson	CHRW	52.00	\$77.34	\$4,021.68	5.2%	4.8%	18.0	2.0%	96%	84	77	5.2%
Cash				\$5,274.14	6.9%			0.7%				0.7%
Averages				\$76,638.00		9.3%	17.2	1.3%	87%	82	88.5	8.2%

Size Diversification

based on Sales Growth Forecast

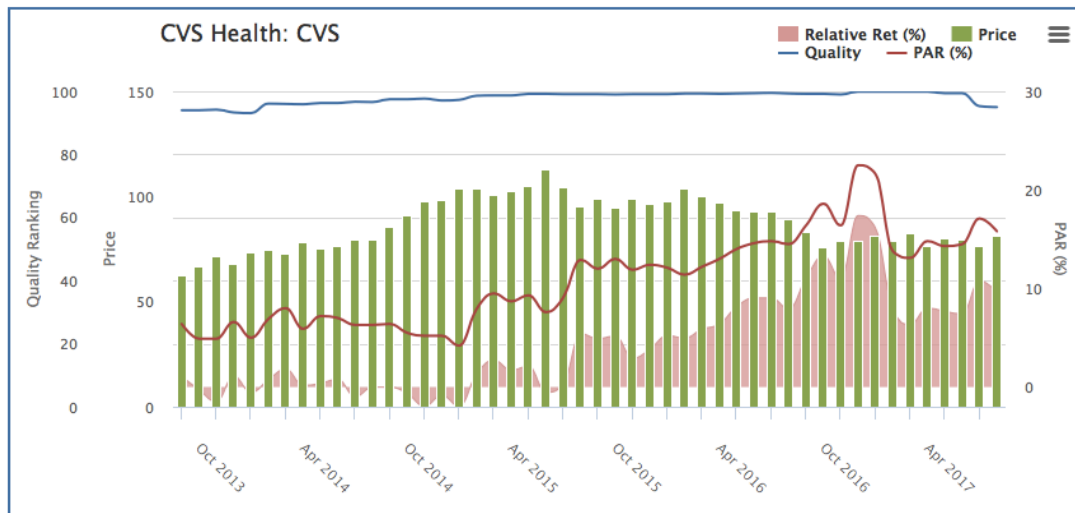


Sector Diversification



CVS, GOOG & BRK.B

CVS (PAR 16.4%) vs S&P 500 Over 2 years



CVS CVS Health Corp. NYSE

18-Oct-2017

© StockCharts.com

Open 72.50 High 74.56 Low 72.12 Close 74.10 Volume 22.5M Chg +1.50 (+2.07%) ▲

CVS (Weekly) 74.10

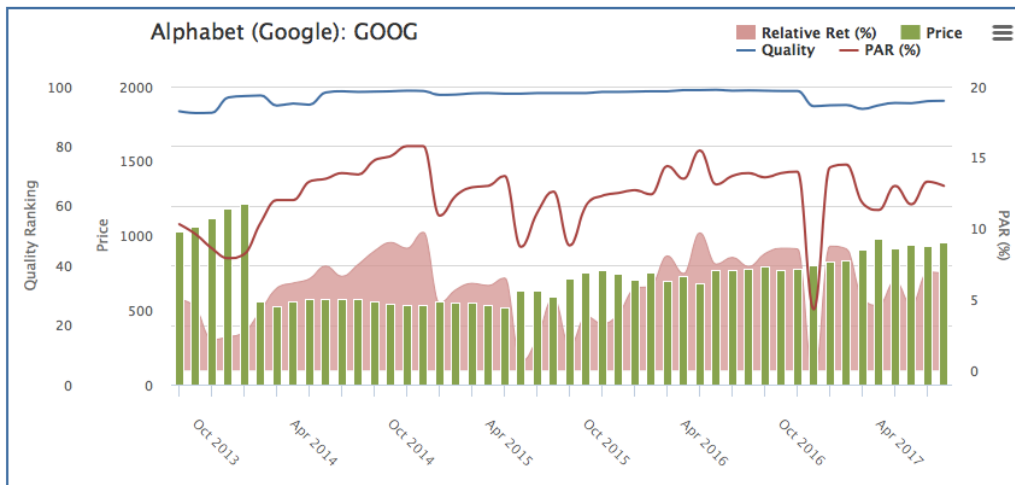
MA(50) 77.88

MA(200) 85.29

Volume 22,465,252



GOOG (PAR 12.4%) vs S&P 500 Over 2 years



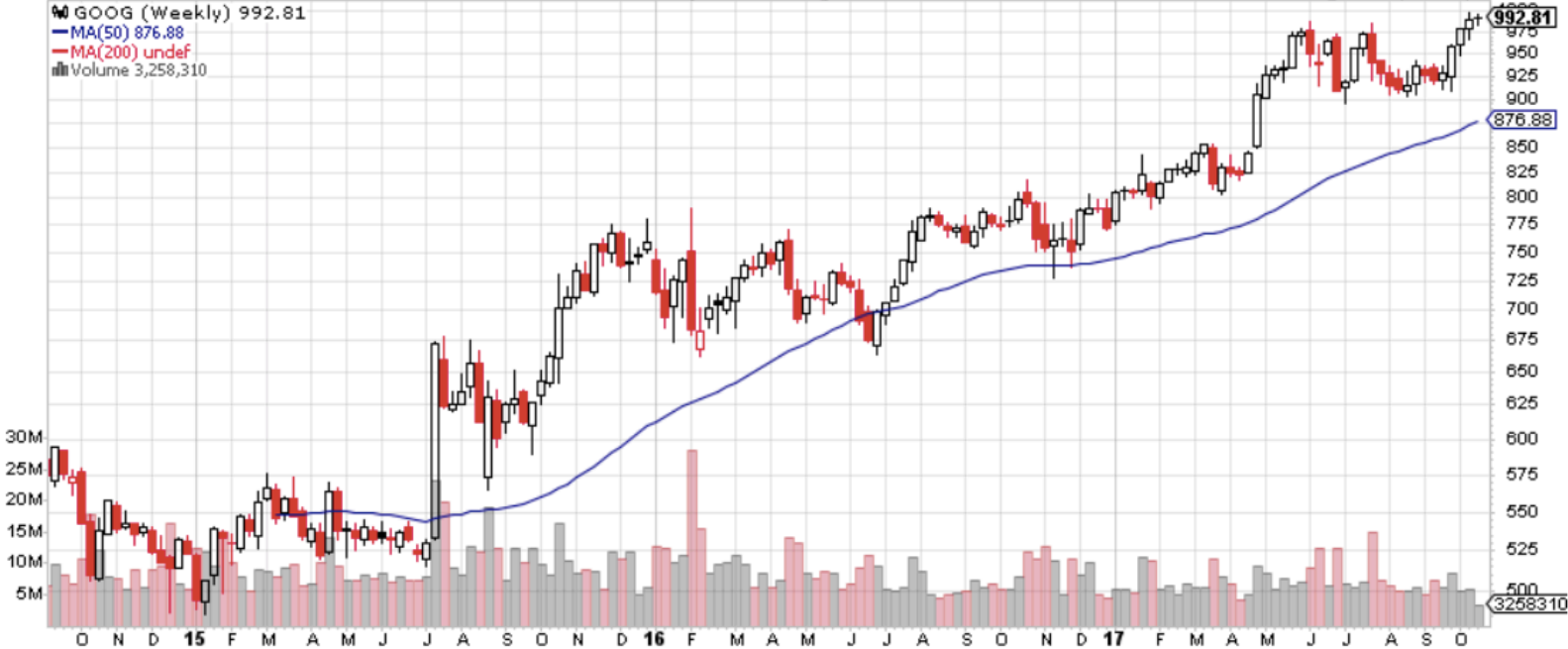
GOOG Alphabet Inc. - Class C Nasdaq GS

18-Oct-2017

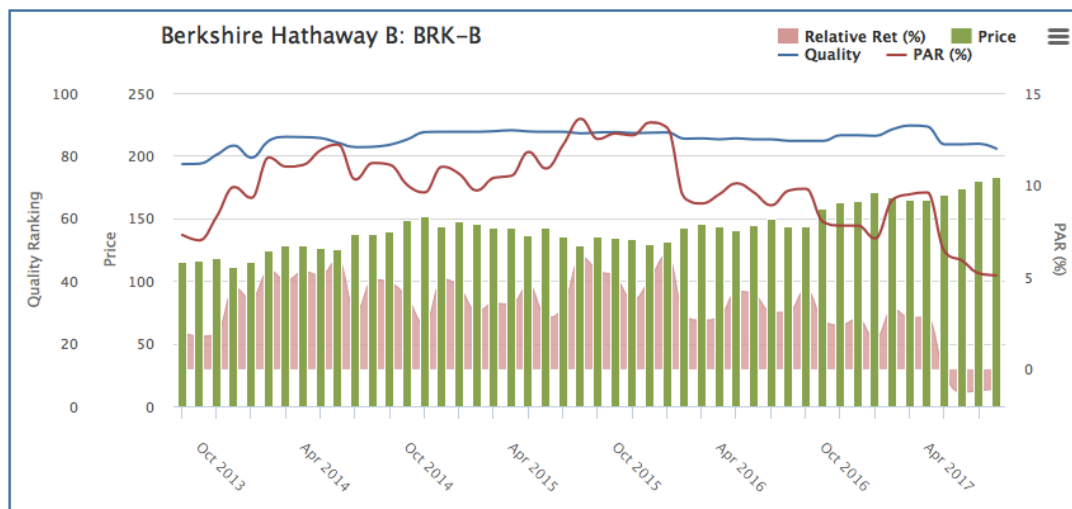
© StockCharts.com

Open 992.10 High 996.72 Low 984.00 Close 992.81 Volume 3.3M Chg +3.13 (+0.32%) ▲

GOOG (Weekly) 992.81
MA(50) 876.88
MA(200) undef
Volume 3,258,310



BRK.B (PAR 4.6%) vs S&P 500 Over 2 years



BRK/B Berkshire Hathaway, Inc. NYSE

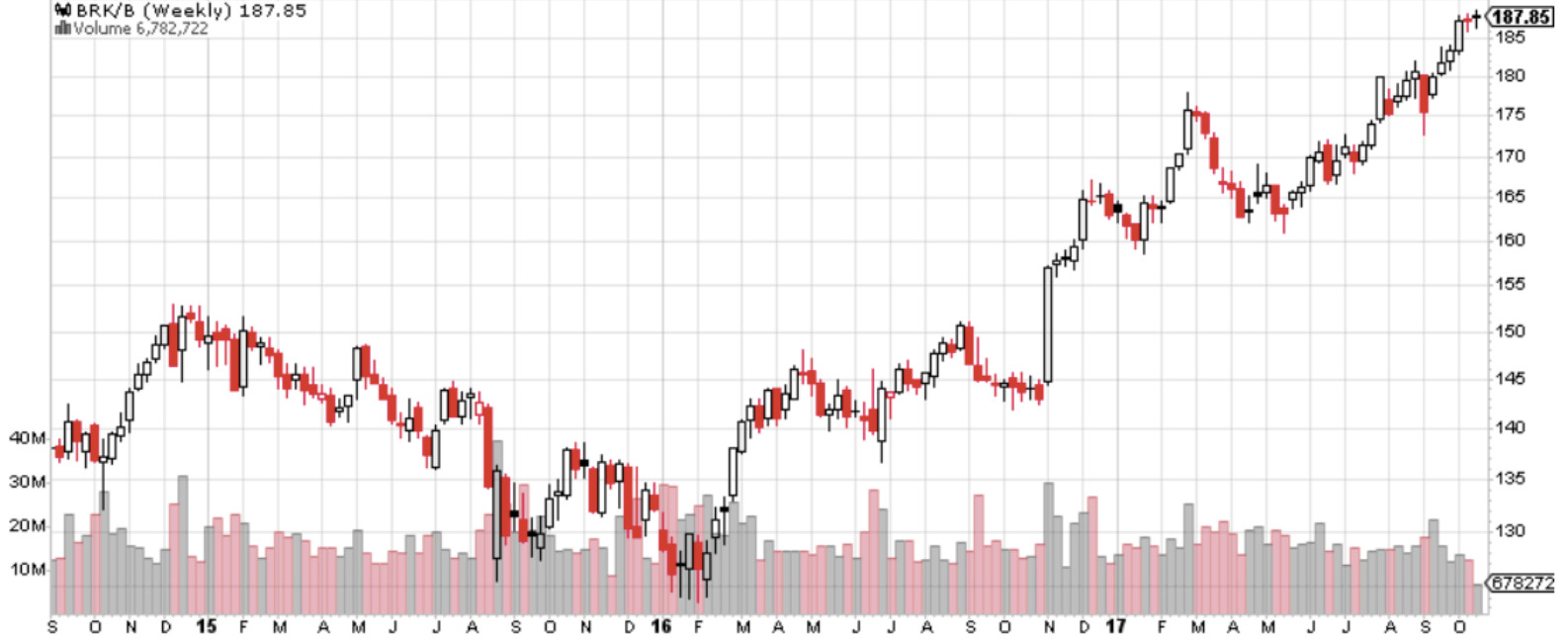
18-Oct-2017

© StockCharts.com

Open 188.00 **High** 188.62 **Low** 186.50 **Close** 187.85 **Volume** 6.8M **Chg** +0.48 (+0.26%) ▲

📈 BRK/B (Weekly) 187.85

📊 Volume 6,782,722



Returns by Company

Model Investment Club of Northern Virginia

Investment Performance

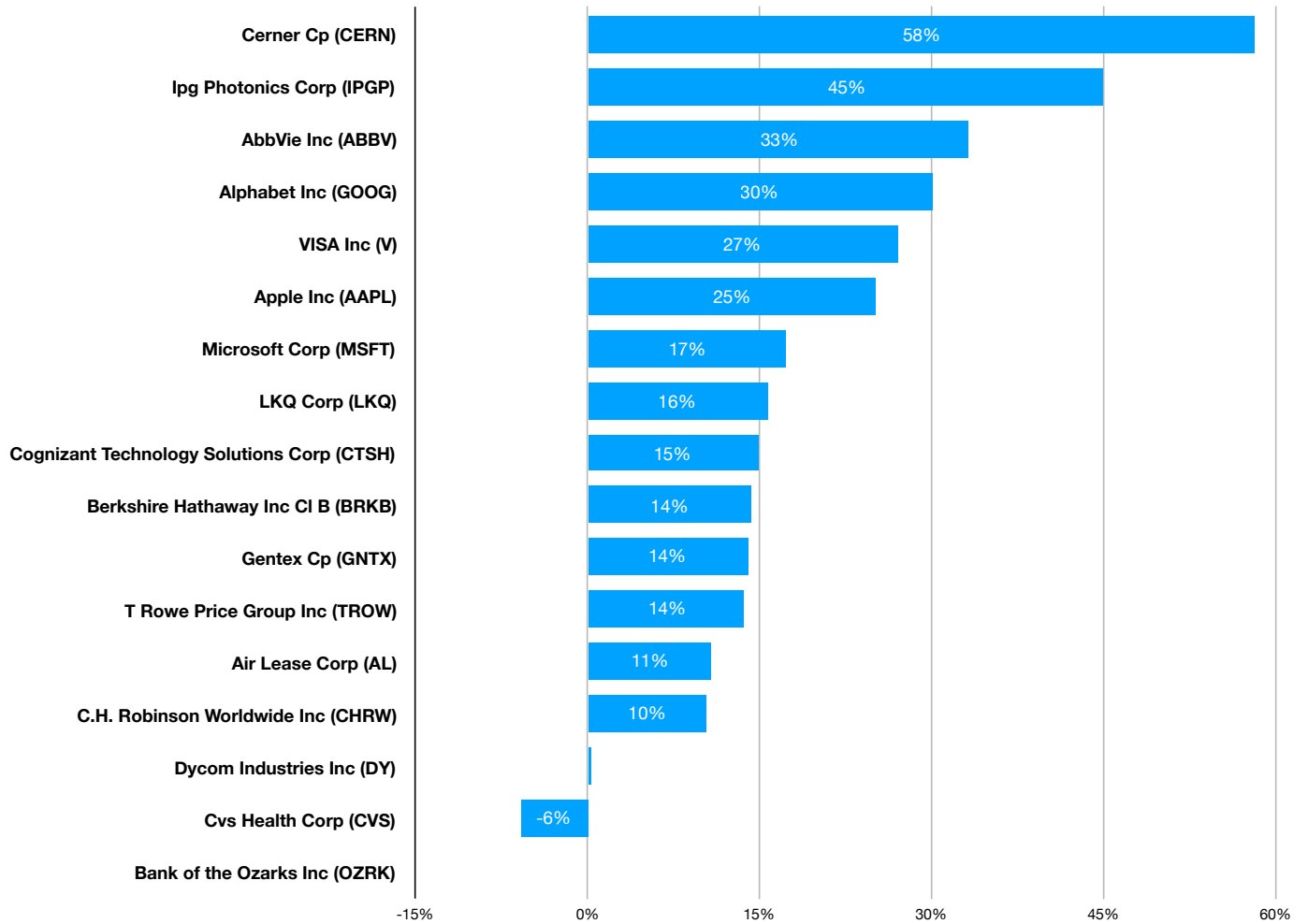
09/11/2008 to 10/18/2017 Show All

Name	Shares	Market Value	Percent of Portfolio	Return Since	Annualized Internal Rate of Return
Cerner Cp (CERN)	25.0000	1,817.25	2.5%	01/20/2017	58.2% detail
Ipg Photonics Corp (IPGP)	30.0000	6,090.00	8.5%	07/17/2014	44.9% detail
AbbVie Inc (ABBV)	71.0000	6,818.84	9.6%	01/02/2013	33.2% detail
Alphabet Inc (GOOG)	4.0000	3,971.24	5.6%	12/16/2016	30.0% detail
VISA Inc (V)	30.0000	3,234.00	4.5%	09/18/2014	27.0% detail
Apple Inc (AAPL)	35.0000	5,591.60	7.8%	06/16/2011	25.0% detail
Microsoft Corp (MSFT)	50.0000	3,880.50	5.4%	09/18/2009	17.3% detail
LKQ Corp (LKQ)	100.0000	3,754.00	5.3%	01/22/2015	15.7% detail
Cognizant Technology Solutions Corp (CTSH)	60.0000	4,436.40	6.2%	09/22/2011	14.8% detail
Berkshire Hathaway Inc Cl B (BRKB)	25.0000	4,696.25	6.6%	01/16/2014	14.2% detail
Gentex Cp (GNTX)	190.0000	3,887.40	5.5%	06/19/2014	13.9% detail
T Rowe Price Group Inc (TROW)	50.0000	4,788.00	6.7%	09/19/2013	13.6% detail
Air Lease Corp (AL)	90.0000	3,908.70	5.5%	06/19/2014	10.7% detail
C.H. Robinson Worldwide Inc (CHRW)	52.0000	4,021.68	5.6%	08/16/2012	10.3% detail
Dycom Industries Inc (DY)	55.0000	4,678.30	6.6%	12/16/2016	0.3% detail
Cvs Health Corp (CVS)	35.0000	2,593.50	3.6%	12/16/2016	-5.9% detail
Bank of the Ozarks Inc (OZRK)	70.0000	3,196.20	4.5%	06/16/2017	NA detail
		71,363.86	100.0%		

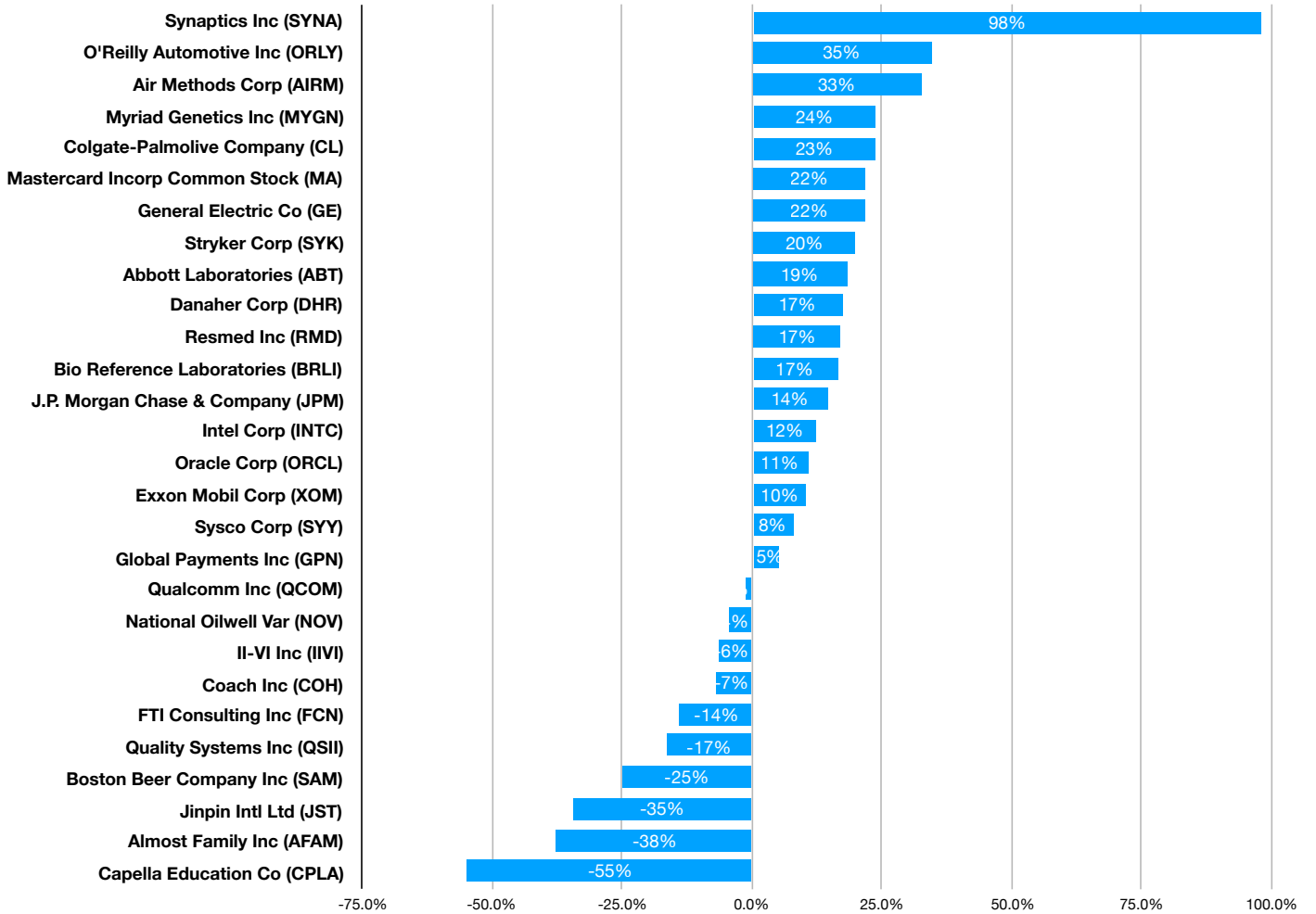
AIRR on Investments (excludes cash) = 12.8%

*Calculated return on all investments (excluding cash accounts) during the time span, including those no longer owned on the end date

Annualized Return of Current Holdings



Annualized Return of Closed Positions

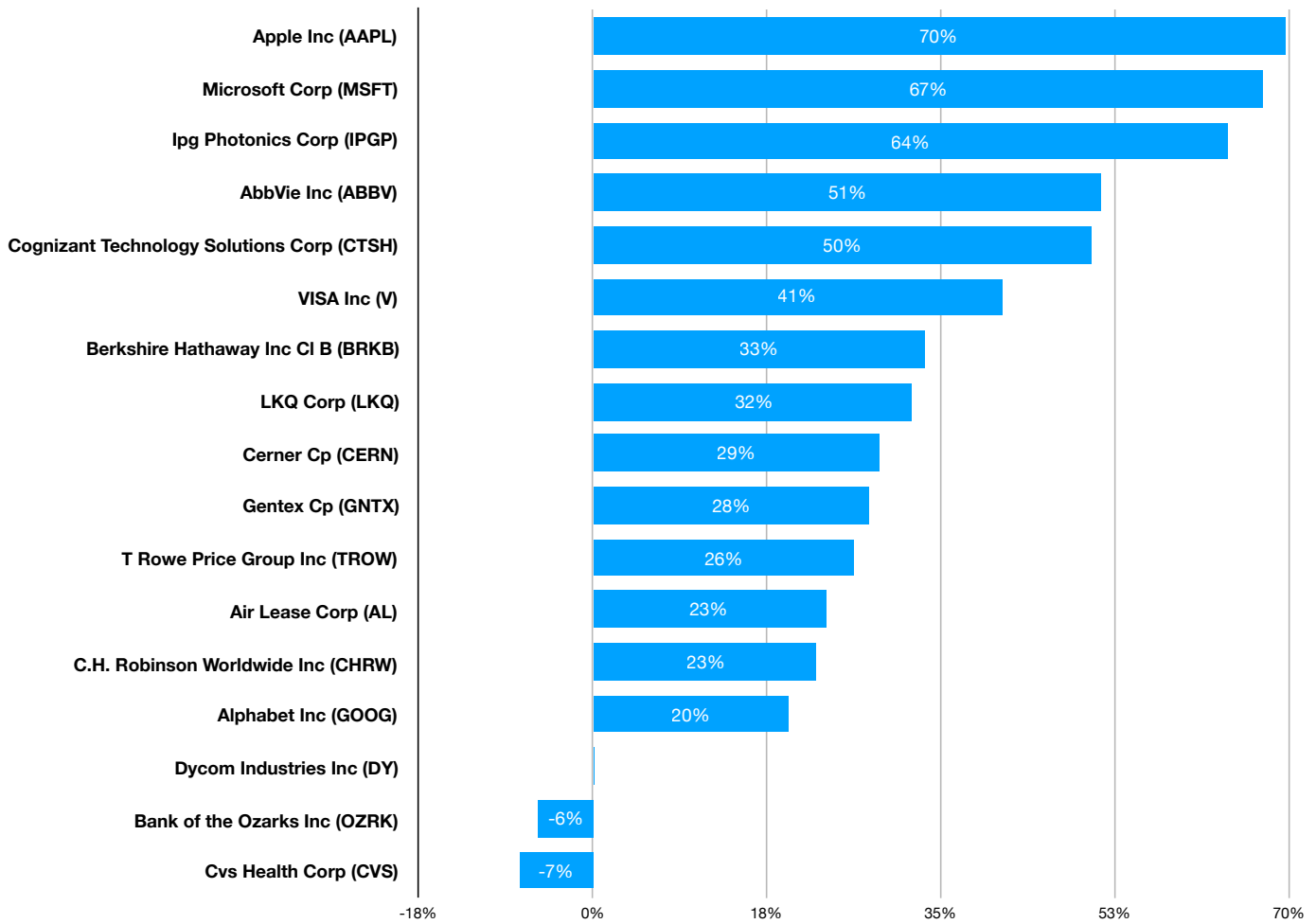


Actual Gain by Company

Valuation (NAV) for 10/18/2017

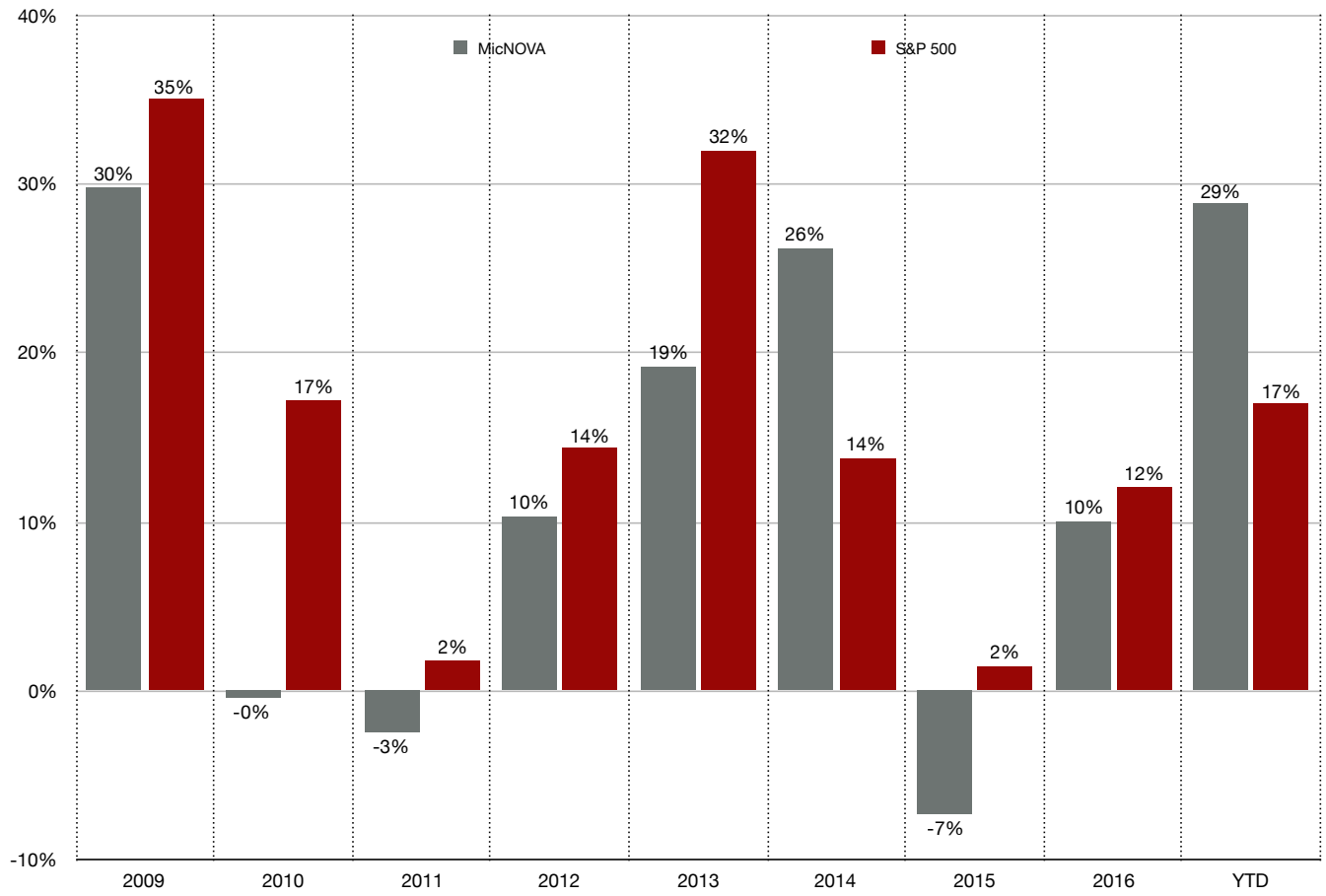
	Shares Held	Cost Basis per Share	Total Cost Basis	Price per Share	Market Value	Unrealized Gain	Percent of Total
AbbVie Inc (ABBV)	71.0000	46.9651	3,334.52	96.0400	6,818.84	3,484.32	8.9%
Air Lease Corp (AL)	90.0000	33.2711	2,994.40	43.4300	3,908.70	914.30	5.1%
Alphabet Inc (GOOG)	4.0000	797.0775	3,188.31	992.8100	3,971.24	782.93	5.2%
Apple Inc (AAPL)	35.0000	48.7109	1,704.88	159.7600	5,591.60	3,886.72	7.3%
Bank of the Ozarks Inc (OZRK)	70.0000	48.1839	3,372.87	45.6600	3,196.20	(176.67)	4.2%
Berkshire Hathaway Inc Cl B (BRKB)	25.0000	125.3368	3,133.42	187.8500	4,696.25	1,562.83	6.1%
C.H. Robinson Worldwide Inc (CHRW)	52.0000	59.9352	3,116.63	77.3400	4,021.68	905.05	5.2%
Cerner Cp (CERN)	25.0000	51.7132	1,292.83	72.6900	1,817.25	524.42	2.4%
Cognizant Technology Solutions Corp (CTSH)	60.0000	36.9833	2,219.00	73.9400	4,436.40	2,217.40	5.8%
Cvs Health Corp (CVS)	35.0000	79.4977	2,782.42	74.1000	2,593.50	(188.92)	3.4%
Dycom Industries Inc (DY)	55.0000	84.8918	4,669.05	85.0600	4,678.30	9.25	6.1%
Gentex Cp (GNTX)	190.0000	14.8071	2,813.34	20.4600	3,887.40	1,074.06	5.1%
Ipg Photonics Corp (IPGP)	30.0000	73.5667	2,207.00	203.0000	6,090.00	3,883.00	8.0%
LKQ Corp (LKQ)	100.0000	25.4593	2,545.93	37.5400	3,754.00	1,208.07	4.9%
Microsoft Corp (MSFT)	50.0000	25.4400	1,272.00	77.6100	3,880.50	2,608.50	5.1%
T Rowe Price Group Inc (TROW)	50.0000	70.6964	3,534.82	95.7600	4,788.00	1,253.18	6.2%
VISA Inc (V)	30.0000	63.5177	1,905.53	107.8000	3,234.00	1,328.47	4.2%
			46,086.95		71,363.86	25,276.91	93.1%
Cash Account			Total Cost Basis		Market Value	Unrealized Gain/(Loss)	Percent of Total
Scottrade Account			5,274.14		5,274.14	0.00	6.9%
			5,274.14		5,274.14	0.00	6.9%
Total Securities and Cash Accounts			51,361.09		76,638.00	25,276.91	100.0%

Percent Gain of Holdings



MicNOVA vs SP&500 Returns by Year

MicNOVA Return vs S&P 500



**Which Stocks Made
2017 a Strong Year?**

Model Investment Club of Northern Virginia

Investment Performance

12/31/2016 to 10/18/2017 Show All

Name	Shares	Market Value	Percent of Portfolio	Return Since	Annualized Internal Rate of Return	
Ipg Photonics Corp (IPGP)	30.0000	6,090.00	8.5%	12/31/2016	147.2%	detail
AbbVie Inc (ABBV)	71.0000	6,818.84	9.6%	12/31/2016	94.2%	detail
Cerner Cp (CERN)	25.0000	1,817.25	2.5%	01/20/2017	58.2%	detail
Apple Inc (AAPL)	35.0000	5,591.60	7.8%	12/31/2016	52.3%	detail
VISA Inc (V)	30.0000	3,234.00	4.5%	12/31/2016	51.1%	detail
Cognizant Technology Solutions Corp (CTSH)	60.0000	4,436.40	6.2%	12/31/2016	42.4%	detail
T Rowe Price Group Inc (TROW)	50.0000	4,788.00	6.7%	12/31/2016	38.7%	detail
Alphabet Inc (GOOG)	4.0000	3,971.24	5.6%	12/31/2016	37.2%	detail
Air Lease Corp (AL)	90.0000	3,908.70	5.5%	12/31/2016	35.7%	detail
Microsoft Corp (MSFT)	50.0000	3,880.50	5.4%	12/31/2016	35.0%	detail
LKQ Corp (LKQ)	100.0000	3,754.00	5.3%	12/31/2016	29.0%	detail
Berkshire Hathaway Inc Cl B (BRKB)	25.0000	4,696.25	6.6%	12/31/2016	19.5%	detail
C.H. Robinson Worldwide Inc (CHRW)	52.0000	4,021.68	5.6%	12/31/2016	12.9%	detail
Gentex Cp (GNTX)	190.0000	3,887.40	5.5%	12/31/2016	6.8%	detail
Dycom Industries Inc (DY)	55.0000	4,678.30	6.6%	12/31/2016	-0.1%	detail
Cvs Health Corp (CVS)	35.0000	2,593.50	3.6%	12/31/2016	-5.3%	detail
Bank of the Ozarks Inc (OZRK)	70.0000	3,196.20	4.5%	06/16/2017	NA	detail
		71,363.86	100.0%			

AIRR on Investments (excludes cash) = 36.8%

*Calculated return on all investments (excluding cash accounts) during the time span, including those no longer owned on the end date

Investment Performance Detail

AbbVie Inc (ABBV) 12/31/2016 to 10/18/2017

Date	Description	Investments	Returns
12/31/2016	beginning market value	2,567.42	
02/15/2017	cash distribution, qualified dividend		26.24
05/15/2017	cash distribution, qualified dividend		26.24
05/26/2017	buy, 30 shares	1,981.71	
05/26/2017	commission	6.95	
08/15/2017	cash distribution, qualified dividend		45.44
10/18/2017	ending market value	6,818.84	
		4,556.08	6,916.76

Investment Performance Detail

Ipg Photonics Corp (IPGP) 12/31/2016 to 10/18/2017

Date	Description	Investments	Returns
12/31/2016	beginning market value	2,961.30	
10/18/2017	ending market value	6,090.00	
		2,961.30	6,090.00

Investment Performance Detail

Apple Inc (AAPL) 12/31/2016 to 10/18/2017

Date	Description	Investments	Returns
12/31/2016	beginning market value	4,053.70	
02/16/2017	cash distribution, qualified dividend		19.95
05/18/2017	cash distribution, qualified dividend		22.05
08/17/2017	cash distribution, qualified dividend		22.05
10/18/2017	ending market value	5,591.60	
		4,053.70	5,655.65

**MicNOVA Return
YTD is 29%**

**Three stocks
contributed 9.3%**

**S&P 500 Return
YTD is 16%**

$$(6,916.76 - 4,556.08) + (6,090.00 - 2,961.30) + (5,655.65 - 4,053.70)$$

$$2,360.68 + 3,128.7 + 1,601.95 = 7,091.33$$

$$7,091.33 / 76,638.00 = 9.3\%$$