

ITC Holdings Corp

S&P Capital IQ Recommendation



S&P Capital IQ Equity Analyst C. Muir

Price
\$32.70 (as of Jun 12, 2015 4:00 PM ET)

12-Mo. Target Price
\$41.00

Report Currency
USD

Investment Style
Mid-Cap Blend

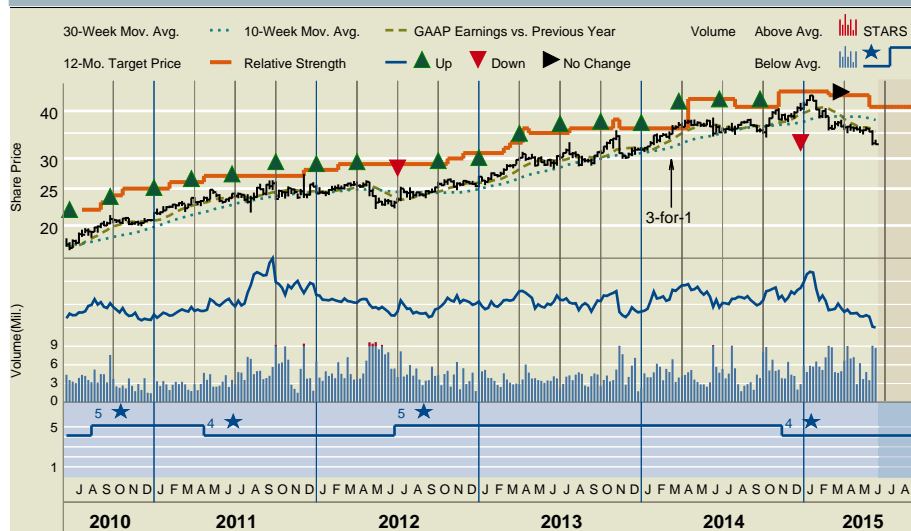
GICS Sector Utilities
Sub-Industry Electric Utilities

Summary This electricity transmission company operates a high-voltage system serving primarily Michigan and Iowa. Also, it has received utility status in Kansas and Oklahoma.

Key Stock Statistics (Source S&P Capital IQ, Vickers, company reports)

52-Wk Range	\$44.00–32.49	S&P Oper. EPS 2015E	2.05	Market Capitalization(B)	\$5.035	Beta	0.12
Trailing 12-Month EPS	\$1.54	S&P Oper. EPS 2016E	2.20	Yield (%)	1.99	S&P 3-Yr. Proj. EPS CAGR(%)	10
Trailing 12-Month P/E	21.2	P/E on S&P Oper. EPS 2015E	16.0	Dividend Rate/Share	\$0.65	S&P Quality Ranking	A+
\$10K Invested 5 Yrs Ago	\$20,402	Common Shares Outstg. (M)	154.0	Institutional Ownership (%)	90		

Price Performance



Past performance is not an indication of future performance and should not be relied upon as such.

Analysis prepared by Equity Analyst **C. Muir** on May 26, 2015 04:14 PM, when the stock traded at **\$35.92**.

Highlights

- ITC is likely to report revenue increases of 12% in 2015 and 7.6% in 2016 versus 8.7% in 2014. A growing rate base and new projects entering service, supplemented by higher revenue requirements in 2015, is likely, partly offset by negative true-up adjustments. The formula-based rate-setting mechanism generally benefits the company when maintenance spending is high. In 2016, we see several projects entering service and higher rates.
- EBIT totaled \$670 million in 2014, \$551 million in 2013 and \$471 million in 2012, with corresponding EBIT margins of 65.5%, 55.2% and 56.7%. EBIT margins will fall in 2015 and 2016 to about 59.5% in 2016. We see higher depreciation expense and operations and maintenance costs in both years. Interest expense will increase in both 2015 and 2016, with 2016 about 15% higher than 2014, driven by ITC's capital expenditures.
- Our 2015 recurring EPS estimate, excluding \$0.04 of net nonrecurring charges, is \$2.05, up 11% from 2014's \$1.85, which excluded \$0.31 of net nonrecurring charges. We estimate 2016 EPS of \$2.20, up an additional 7.3%.

Investment Rationale/Risk

- ITC will benefit from an increasing rate base through maintenance investments, leading to higher rates in ITC's Iowa service territory. Also, ITC is building new projects in the upper Midwest and in the Plains states that should boost EPS growth. ITC raised its dividend by 14% in August 2014, and we see another double digit increase this summer. A recent ruling on ITC's transmission rate structure in New England indicates that the Federal Energy Regulatory Commission (FERC) will not reduce rates by as much as the complainants want.
- Risks to our recommendation and target price include a challenge to the current rate structure, slower-than-expected economic growth, milder-than-normal weather and higher interest rates.
- Recently, ITC traded at 17.5X our 2015 EPS estimate, a 10% premium to its electric utility peers. Our 12-month target price of \$41 is 21.5X our estimate, or a 29% premium to electric utility peers. This is warranted by what we expect to be significantly faster-than-peers EPS and dividend growth.

Analyst's Risk Assessment

LOW	MEDIUM	HIGH
-----	--------	------

Our risk assessment reflects ITC's geographic diversification and favorable regulatory and business environment, and the need for its products, while noting its relatively small capitalization.

Revenue/Earnings Data

Revenue (Million \$)

	1Q	2Q	3Q	4Q	Year
2015	272.5	--	--	--	--
2014	258.6	263.2	270.1	231.1	1,023
2013	217.3	229.8	238.8	255.4	941.3
2012	196.7	197.4	214.8	221.7	830.5
2011	179.4	185.1	191.3	201.6	757.4
2010	161.3	168.5	178.0	189.1	696.8

Earnings Per Share (\$)

	2015	2014	2013	2012	2011	2010
0.43	E0.52	E0.53	E0.53	E0.53	E2.05	E2.05
0.43	0.34	0.47	0.30	1.54		
0.32	0.30	0.37	0.48	1.47		
0.29	0.27	0.33	0.31	1.20		
0.27	0.28	0.28	0.27	1.10		
0.22	0.24	0.25	0.24	0.95		

Fiscal year ended Dec. 31. Next earnings report expected: Early August. EPS Estimates based on S&P Capital IQ Operating Earnings; historical GAAP earnings are as reported in Company reports.

Dividend Data

Amount (\$)	Date Decl.	Ex-Div. Date	Stk. of Record	Payment Date
0.163	Aug 13	Aug 28	Sep 2	Sep 15 '14
0.163	Nov 6	Nov 26	Dec 1	Dec 15 '14
0.163	Feb 3	Feb 26	Mar 2	Mar 16 '15
0.163	May 20	May 28	Jun 1	Jun 15 '15

Dividends have been paid since 2005. Source: Company reports.

Past performance is not an indication of future performance and should not be relied upon as such.

Please read the Required Disclosures and Analyst Certification on the last page of this report.

Redistribution or reproduction is prohibited without written permission. This document is not intended to provide personal investment advice and it does not take into account the specific investment objectives, financial situation and the particular needs of any specific person who may receive this report. Investors should seek independent financial advice regarding the suitability and/or appropriateness of making an investment or implementing the investment strategies discussed in this document and should understand that statements regarding future prospects may not be realized. Investors should note that income from such investments, if any, may fluctuate and that the value of such investments may rise or fall. Accordingly, investors may receive back less than they originally invested. Investors should seek advice concerning any impact this investment may have on their personal tax position from their own tax advisor. Please note the publication date of this document. It may contain specific information that is no longer current and should not be used to make an investment decision. Unless otherwise indicated, there is no intention to update this document.

ITC Holdings Corp

Business Summary May 26, 2015

CORPORATE OVERVIEW. ITC Holdings is the first independently owned and operated electricity transmission company in the U.S. with a fully regulated, high-voltage system that transmits electricity to local distribution facilities from generating stations in Michigan, Iowa and other areas. ITC's subsidiaries (ITC Transmission, METC, ITC Midwest, and ITC Great Plains), as independent transmission companies, are subject to rate regulation only by the Federal Energy Regulatory Commission (FERC). ITC's primary operations include scheduling outages to allow for maintenance and construction, balancing electricity generation and demand, and monitoring flows over transmission lines to ensure safety. As of December 31, 2015, the company owned 15,640 circuit miles of transmission lines.

IMPACT OF MAJOR DEVELOPMENTS. On December 5, 2011, ITC announced plans to acquire Entergy's (ETR 61, Hold) transmission assets, totaling 15,400 miles in Arkansas, Louisiana, Mississippi and Texas. The cancelled deal would have given ETR shareholders 50.1% of the merged company in a stock-for-stock exchange. In addition, immediately prior to closing, ITC would have paid a \$700 million, or about \$13.50 per share, debt-funded special dividend. The deal was cancelled on December 13, 2013 due to disapproval from Mississippi regulators.

The Michigan Thumb Loop is a 140-mile, double-circuit 345 kV project with four substations that connects with wind projects. At a cost of about \$510 million, the project was completed on May 13, 2015, with a first phase that entered service in September 2013. ITC recently constructed and now operates two sections or 120 miles, of the "V-plan," a 200-mile, 345 kilovolt (kV) transmission line that will run through portions of southern Kansas. ITC will also construct and own new substations. The \$300 million project was completed in late 2014, with ITC having spent \$315 million. ITC's KETA project is a 225-mile, 345 kV transmission line that runs from southern Kansas into southern Nebraska. ITC owns 174 miles of the \$175 million line that was placed into service in 2012. The Hugo to Valliant project is a \$37 million, 18-mile, 345 kV project in Oklahoma that was completed in 2012. In eastern Iowa, ITC completed an 81-mile, 345 kV line from Salem to Hazleton. ITC placed the \$120 million project into service in April 2013. We believe that ITC will announce several more new projects in the next few years.

PRIMARY BUSINESS DYNAMICS. ITC's customers include utilities, municipalities, co-operatives, power marketers and alternative energy suppliers. ITC's strengths, in our view, include: a supportive regulatory environment and rate-setting formula; smaller weather and commodity-related risks than power generators; and a lack of competition. Network revenues from DTE Energy and CMS Energy generate a substantial portion of the company's revenues. We believe FERC's policy of promoting investment in transmission infrastructure will create opportunities for ITC to add other transmission systems to its holdings.

LEGAL/REGULATORY ISSUES. ITC's rates are established by FERC on a cost-of-service model, which allows for the recovery of expenses and income taxes and a return on invested capital. The rate mechanism approved by FERC allows ITC Transmission to earn a return of 13.88%, METC to earn 13.38%, ITC Midwest to earn 12.38%, and ITC Great Plains to earn 12.16% return on equity.

In November 2013, FERC received a complaint against the Midcontinent Independent System Operator (MISO) and various MISO transmission owners, including ITCT, METC, and ITC Midwest. The complainants are seeking a FERC order reducing the 12.38% base return on equity to 9.15%, among other things. In our view, the outcome of this case will hinge on the outcome of a similar case that was filed in New England in September 2011. In August 2013, an administrative law judge (ALJ) found that the base ROE was not reasonable under the standard application of FERC methodology; however, the ALJ left policy considerations and additional adjustments to the commission. In October 2014, the FERC issued a decision in the New England case lowering the ROE in that case to 10.57% from 11.14% and changed its DCF methodology to match that used for pipelines. We believe a similar outcome is likely in ITC's case.

ITC's subsidiaries are authorized to use a forward-looking test period in the fall of each year for rates commencing January 1 of the next year through December 31 of that same year. True-up mechanisms correct for any differences between the actual rate and the rate that should have been charged. ITC Transmission's rates are \$2.41/kW month for 2015, compared with \$2.31, \$2.15, \$2.19 and \$2.50 in 2014, 2013, 2012 and 2011, respectively. METC's 2014 rates are \$2.72/kW month compared with \$2.78, \$2.53, \$2.41 and \$2.33 in 2014, 2013, 2012 and 2011, respectively. ITC Midwest's 2014 rates are \$9.27/kW month compared with \$8.80, \$7.81, \$6.80 and \$6.69 in 2014, 2013, 2012 and 2011, respectively. There are other upgrade and rebuild projects throughout ITC's system. We expect rates to continue rising during periods of capital expansion and increasing rate bases.

FINANCIAL TRENDS. ITC's capital expenditures totaled \$794 million in 2014, \$822 million in 2013, and \$807 million in 2012. It plans to spend \$4.5 billion between 2014 and 2018. ITC's debt-to-capital ratio was 71% at the end of 2014, down from 80% at year-end 2007, but higher than the 69% last year. While ITC's dividend has historically grown by about 5% annually, ITC has recently accelerated its dividend growth. We believe it will boost its dividend by about 12% this year, following last year's 14% increase. In May 2015, ITC said it expects to grow EPS by 11% to 13% annually and to grow its dividend by 10% to 15% annually.

Corporate Information

Investor Contact

P. Wenzel (248-946-3570)

Office

27175 Energy Way, Novi, MI 48377.

Telephone

248-946-3000.

Fax

248-374-7140.

Website

<http://www.itc-holdings.com>

Officers

Chrmn, CEO & Pres

J.L. Welch

SVP & General Counsel

C.M. Soneral

COO & EVP

J.E. Jipping

Secy

W.A. McIntyre

SVP, CFO & Treas

R.P. Hayes

Board Members

A. Ernst

C. H. Franklin

E. G. Jepsen

D. R. Lopez

H. R. O'Leary

T. G. Stephens

L. C. Stewart

G. B. Stewart, III

J. L. Welch

Domicile

Michigan

Founded

2002

Employees

587

Stockholders

703

ITC Holdings Corp

Quantitative Evaluations

S&P Capital IQ Fair Value Rank	4+	1	2	3	4	5
		LOWEST				HIGHEST

Based on S&P Capital IQ's proprietary quantitative model, stocks are ranked from most overvalued (1) to most undervalued (5).

Fair Value Calculation **\$36.80** Analysis of the stock's current worth, based on S&P Capital IQ's proprietary quantitative model suggests that ITC is slightly undervalued by \$4.10 or 12.5%.

Investability Quotient Percentile	93
	LOWEST = 1 HIGHEST = 100

ITC scored higher than 93% of all companies for which an S&P Capital IQ Report is available.

Volatility	LOW	AVERAGE	HIGH
-------------------	-----	---------	------

Technical Evaluation **BEARISH** Since June, 2015, the technical indicators for ITC have been BEARISH.

Insider Activity	NA	UNFAVORABLE	NEUTRAL	FAVORABLE
-------------------------	----	-------------	---------	-----------

For further clarification on the terms used in this report, please visit www.standardandpoors.com/stockreportguide

Expanded Ratio Analysis

	2014	2013	2012	2011
Price/Sales	6.20	5.33	4.77	5.12
Price/Tangible Book Value	9.27	8.12	9.55	14.68
Price/Pretax Income	16.08	14.23	13.37	14.55
P/E Ratio	25.98	21.48	21.11	22.58
Avg. Diluted Shares Outstg (M)	156.8	157.0	154.7	153.2

Figures based on calendar year-end price

Key Growth Rates and Averages

Past Growth Rate (%)	1 Year	3 Years	5 Years	9 Years
Revenue	8.69	10.82	10.49	18.91
Net Income	4.53	13.58	14.11	25.43

Ratio Analysis (Annual Avg.)

	2014	2013	2012	2011
Net Margin (%)	23.86	23.76	22.97	20.63
% LT Debt to Capitalization	68.05	66.58	67.33	69.81

Company Financials Fiscal Year Ended Dec. 31

Per Share Data (\$)	2014	2013	2012	2011	2010	2009	2008	2007	2006	2005
Tangible Book Value	4.36	3.93	2.68	1.72	0.77	0.06	NM	NM	NM	0.84
Earnings	1.54	1.47	1.20	1.10	0.95	0.86	0.73	0.56	0.31	0.35
S&P Capital IQ Core Earnings	1.55	1.48	1.22	1.11	0.96	0.88	0.73	0.56	0.31	0.36
Dividends	0.61	0.54	0.49	0.46	0.44	0.42	0.40	0.38	0.36	0.18
Payout Ratio	40%	37%	41%	42%	46%	48%	54%	67%	117%	50%
Prices:High	42.01	35.58	26.58	27.30	21.30	17.59	20.00	19.53	13.74	10.10
Prices:Low	31.18	25.54	22.10	20.59	7.27	10.75	10.78	12.63	8.17	7.67
P/E Ratio:High	27	24	22	25	23	20	27	35	45	29
P/E Ratio:Low	20	17	18	19	8	13	15	23	27	22

Income Statement Analysis (Million \$)

	2014	2013	2012	2011	2010	2009	2008	2007	2006	2005
Revenue	1,023	941	831	757	697	621	618	426	224	205
Depreciation	122	112	100	88.8	87.0	86.0	94.8	67.9	40.2	33.2
Maintenance	NA	NA	NA	NA	NA	NA	NA	NA	NA	NA
Fixed Charges Coverage	NA	3.09	2.90	2.81	2.60	2.61	2.34	2.48	2.04	2.81
Construction Credits	NA	30.2	23.0	16.7	13.4	13.2	11.6	8.15	3.98	2.79
Effective Tax Rate	38.1%	33.7%	36.6%	35.6%	36.1%	37.2%	38.1%	33.3%	29.2%	35.3%
Net Income	244	234	188	172	146	131	109	73.3	33.2	34.7
S&P Capital IQ Core Earnings	244	233	189	170	145	131	109	73.8	34.0	35.1

Balance Sheet & Other Financial Data (Million \$)

	2014	2013	2012	2011	2010	2009	2008	2007	2006	2005
Gross Property	NA	6,177	5,404	4,609	4,002	3,593	3,230	2,840	1,807	1,018
Capital Expenditures	733	822	803	557	388	405	402	287	167	119
Net Property	NA	4,847	4,135	3,416	2,872	2,542	2,304	1,960	1,198	604
Capitalization:Long Term Debt	NA	3,412	2,495	2,645	2,497	2,434	2,248	2,243	1,262	517
Capitalization:% Long Term Debt	68.1	67.9	63.8	67.8	69.1	70.7	70.8	79.9	70.3	66.2
Capitalization:Preferred	NA	Nil	Nil	Nil	Nil	Nil	Nil	Nil	Nil	Nil
Capitalization:% Preferred	NA	Nil	Nil	Nil	Nil	Nil	Nil	Nil	Nil	Nil
Capitalization:Common	1,670	1,614	1,415	1,259	1,117	1,012	929	563	532	264
Capitalization:% Common	NA	32.1	36.2	32.2	30.9	29.4	29.2	20.1	29.7	33.8
Total Capital	5,773	5,126	4,362	3,904	3,614	3,446	3,322	2,897	1,795	802
% Operating Ratio	NA	60.1	61.3	60.1	60.6	60.0	64.5	66.0	68.0	68.0
% Earned on Net Property	NA	11.0	11.4	12.6	13.2	13.5	13.4	11.5	9.6	13.9
% Return on Revenue	23.9	24.8	22.6	22.7	20.9	21.1	17.7	17.2	14.8	16.9
% Return on Invested Capital	NA	8.5	8.3	8.5	8.2	7.9	7.4	6.2	6.1	9.4
% Return on Common Equity	14.8	15.3	13.9	14.2	13.7	13.5	14.6	13.4	8.3	15.0

Data as originally reported in Company reports.; bef. results of disc opers/spec. items. Per share data adj. for stk. divs.; EPS diluted. E-Estimated. NA-Not Available. NM-Not Meaningful. NR-Not Ranked. UR-Under Review.

ITC Holdings Corp



Sub-Industry Outlook

Our fundamental outlook for electric utilities is neutral. Fundamentally, we believe the electric distribution utilities will benefit from still low fuel and purchased power costs and new rate increases, partly offset by higher O&M costs. We expect more normal summer weather to aid utility growth in 2015 following cool summer weather in 2014. We also look for a continued slow recovery in industrial sales to benefit electric utilities. However, we expect wholesale power operators to continue to remain challenged by lower-margin power contracts.

In the aftermath of the nuclear crisis in Japan, companies have faced intense scrutiny regarding the safety of their nuclear plants and in obtaining license extensions of existing plants, and/or the possible development of new facilities. For a variety of safety and economic reasons, several nuclear plants have been retired, and we expect that more will be. Additionally, we see a significant amount of coal generation being retired as well due to recent EPA regulations that would require costly retrofits to the plants. These retirements are being replaced predominantly with natural gas fired generation, but is being supplemented with new wind and solar plants.

While the repeal of the Public Utility Holding Company Act (PUHCA) in 2005 was expected to lead to further industry consolidation, the termination of several planned mergers in 2006 and later made companies cautious about investing the time and money required in the regulatory approval process. Over the past few years, however, there have been several large mergers that were completed. While a recent electric transmission merger was scuttled by regulatory opposition, we believe that deal activity is beginning to increase with two major mergers announced in 2014.

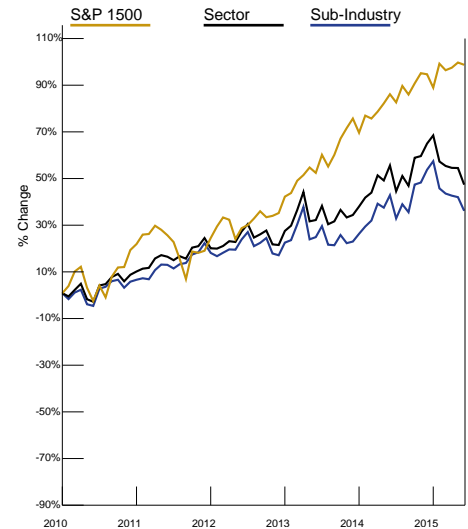
Year-to-date through March 31, 2015, the S&P Electric Utilities Index was down 6.7%, compared to a 5.8% decrease for the S&P 500 Utilities Index and a 0.9% rise in the S&P 1500 Composite Index. This follows a 25.2% increase in 2014, versus a 22.9% increase for the S&P 500 Utilities Index and a 10.9% gain for the S&P 1500.

--Christopher Muir

Industry Performance

GICS Sector: Utilities
Sub-Industry: Electric Utilities

Based on S&P 1500 Indexes
Five-Year market price performance through Jun 13, 2015



NOTE: All Sector & Sub-Industry information is based on the Global Industry Classification Standard (GICS)

Past performance is not an indication of future performance and should not be relied upon as such.

Sub-Industry : Electric Utilities Peer Group*: Based on market capitalizations within GICS Sub-Industry

Peer Group	Stock Symbol	Stk.Mkt. Cap. (Mil. \$)	Recent Stock Price(\$)	52 Week High/Low(\$)	Beta	Yield (%)	P/E Ratio	Fair Value Calc.(\$)	Quality Ranking	S&P IQ %ile	Return on Revenue (%)	LTD to Cap (%)
ITC Holdings	ITC	5,035	32.70	44.00/32.49	0.12	2.0	21	36.80	A+	93	23.9	68.0
Brookfield Infrastr Ptnrs L.P.	BIP	6,596	43.88	46.95/36.66	0.77	4.8	91	NA	NR	78	12.3	51.5
Centrais Eletr Brasileiras SA ADR	EBR	2,773	2.05	3.91/1.49	1.48	6.7	NM	NA	NR	19	NM	36.4
Comp En Minas Gerais-CEMIG Com ADS	CIG.C	4,138	4.30	8.98/3.46	1.09	8.9	2	NA		8	23.1	32.1
Comp Paranaense Energia B' ADR	ELP	2,876	10.51	18.29/9.72	1.15	8.0	6	NA	NR	29	9.6	24.1
Emera Inc	EMA.C	4,730	32.64	34.97/30.26	0.87	4.9	13	NA	A	NA	15.2	49.1
Empresa Dist y Comercial Norte ADS	EDN	333	15.06	18.97/8.66	2.22	Nil	13	NA	NR	9	NM	79.2
Fortis Inc	FTS.C	8,023	28.91	35.22/28.91	0.61	4.7	19	NA	A-	NA	7.1	52.2
Interconexion Electrica SA ADS	IESFY	3,234	73.00	120.65/73.00	0.77	1.0	14	NA	NR	NA	23.7	38.5
NextEra Energy Corp Unit	EE.PO	813	62.54	70.97/58.60	NA	4.7	NM	NA	NR	NA	NA	NA
OGE Energy	OGE	5,818	29.15	39.29/29.05	0.60	3.4	15	30.90	A-	89	16.1	45.9
Otter Tail	OTTR	1,009	26.92	33.44/26.14	1.01	4.6	18	NA	B	57	7.1	46.5
PNM Resources	PNM	1,977	24.82	31.60/24.26	0.49	3.2	17	22.00	B	76	8.1	43.4
Pampa Energia SA ADR	PAM	780	14.84	19.78/8.12	1.07	Nil	4	NA	NR	12	8.5	45.9
Portland General Electric	POR	2,617	33.40	41.04/31.41	0.41	3.6	16	38.30	NR	43	9.2	48.2

NA-Not Available NM-Not Meaningful NR-Not Rated. *For Peer Groups with more than 15 companies or stocks, selection of issues is based on market capitalization.

S&P Capital IQ Analyst Research Notes and other Company News**May 26, 2015**

02:42 pm ET ... S&P CAPITAL IQ MAINTAINS BUY OPINION ON SHARES OF ITC HOLDINGS (ITC 35.88****): We are lifting our '15 EPS estimate by \$0.01 to \$2.05, but lowering '16's by \$0.05 to \$2.20. We are also reducing our 12-month target price by \$3 to \$41, reflecting lower peer valuations. Our target price is 21.5X our '15 EPS estimate, or a 29% premium to our peer target that we think is warranted by our projection of a three-year EPS growth rate that is much higher than its peers. We see strong capital spending on both maintenance and new projects that should help to drive EPS growth. Q1 EPS of \$0.47, vs. \$0.44, misses our \$0.48 EPS estimate and the \$0.49 Capital IQ consensus. /C. Muir

March 5, 2015

04:32 pm ET ... S&P CAPITAL IQ MAINTAINS BUY OPINION ON SHARES OF ITC HOLDINGS (ITC 37.62****): We are trimming our '15 EPS estimate by \$0.03 to \$2.04 and starting '16's at \$2.25. We are also lowering our 12-month target price by \$1 to \$44, reflecting a slight drop in our EPS growth forecast. Our target price is 21.6X our '15 EPS estimate, or a 19% premium to our peer target that we think is warranted by our projection of a higher-than-peers three-year EPS growth rate. We think high capital spending levels will continue to lead to higher rates, supporting EPS and dividend growth. Q4 EPS of \$0.48, vs. \$0.44, misses our estimate and the Capital IQ consensus, both at \$0.50. /C. Muir

November 12, 2014

11:12 am ET ... S&P CAPITAL IQ LOWERS OPINION ON SHARES OF ITC HOLDINGS TO BUY FROM STRONG BUY (ITC 39.72****): We are trimming our '14 EPS estimate by \$0.03 to \$1.87 and '15's by \$0.02 to \$2.07. We are lifting our 12-month target by \$4 to \$45 helped by higher peer valuations and reduced risk surrounding rate complaints. Our target price is 21.7X our '15 EPS estimate, or a 33% premium to our peer target that we think is warranted by three-year EPS and dividend growth rates that are more than twice its peers. We believe that substantial capital spending will help to drive EPS growth. Q3 recurring EPS of \$0.47, vs. \$0.42, misses our \$0.49 estimate, but matches the Capital IQ consensus. /C. Muir

August 21, 2014

ITC Holdings Corp. has named Rejji P. Hayes as a SVP and the company's permanent CFO. Hayes will also continue in the role of treasurer. ITC also announced the appointment of Albert Ernst and Dave Lopez to its board of directors. As CFO, Rejji P. Hayes is responsible for the company's accounting, internal audit, investor relations, treasury, financial planning and analysis, management reporting, and risk management and insurance functions of the company. Hayes will report to Joseph L. Welch, chairman, president and CEO of ITC. ITC noted that Hayes joined it in February 2012 as its VP of finance and treasurer. Previously, he was assistant treasurer and director, Corporate Finance and Financial Strategy at Exelon Corp. Albert Ernst is a retired partner at Dykema Gossett PLLC, where he served as director of Dykema's Energy Industry Group.

August 19, 2014

On August 13, 2014, the Board of Directors of ITC Holdings Corp. voted to expand the size of the Board from eight to ten directors and appointed Albert Ernst and Dave R. Lopez as directors of the company. There are no understandings or arrangements between Messrs. Ernst or Lopez and any other person pursuant to which Messrs. Ernst or Lopez was selected as a director of the company.

August 14, 2014

ITC Holdings Corp. announced that Rejji P. Hayes has been named as a senior vice president and the company's permanent chief financial officer, effective immediately. Mr. Hayes will also continue in the role of treasurer. ITC also announced the appointment of Albert Ernst and Dave Lopez to its board of directors, effective immediately. As CFO, Rejji P. Hayes is responsible for the company's accounting, internal audit, investor relations, treasury, financial planning and analysis, management reporting, and risk management and insurance functions of the company. Mr. Hayes will report to Joseph L. Welch, chairman, president and CEO of ITC. Mr. Hayes joined ITC in February 2012 as its vice president of finance and treasurer. Previously, he was assistant treasurer and director, Corporate Finance and Financial Strategy at Exelon Corporation in Chicago. Albert Ernst is a retired partner at Dykema Gossett PLLC, where he served as director of Dykema's Energy Industry Group. Dave Lopez recently concluded his role as interim superintendent of Oklahoma City Public Schools, after having served as Oklahoma's Secretary of Commerce.

August 6, 2014

10:51 am ET ... S&P CAPITAL IQ MAINTAINS STRONG BUY OPINION ON SHARES OF ITC HOLDINGS (ITC 35.1****): We are keeping our '14 EPS estimate at \$1.90 and our '15 estimate at \$2.09. However, we are lowering our target price by \$2 to \$41 due to lower peer valuations. Our target price is 19.6X our '15 EPS estimate, or a 24% premium to our peer target that we think is warranted by our expectations for a three year EPS growth rate that is higher than peers. A recent regulatory ruling on a New England return on equity challenge indicates only a slight decline in allowed returns. Q2 recurring EPS of \$0.46, vs. \$0.40, misses our \$0.47 estimate, but beats the \$0.45 Capital IQ consensus. /C. Muir

June 20, 2014

06:45 am ET ... ITC HOLDINGS CORP. (ITC 35.8) UNCHANGED, CREDIT SUISSE DOWNGRADES ITC HOLDINGS CORP. TO UNDERPERFORM... Credit Suisse downgrades ITC Holdings Corp. (NYSE: ITC) from Neutral to Underperform. 2014 Benzinga.com. Benzinga does not provide investment advice. All rights reserved. Acquire Media

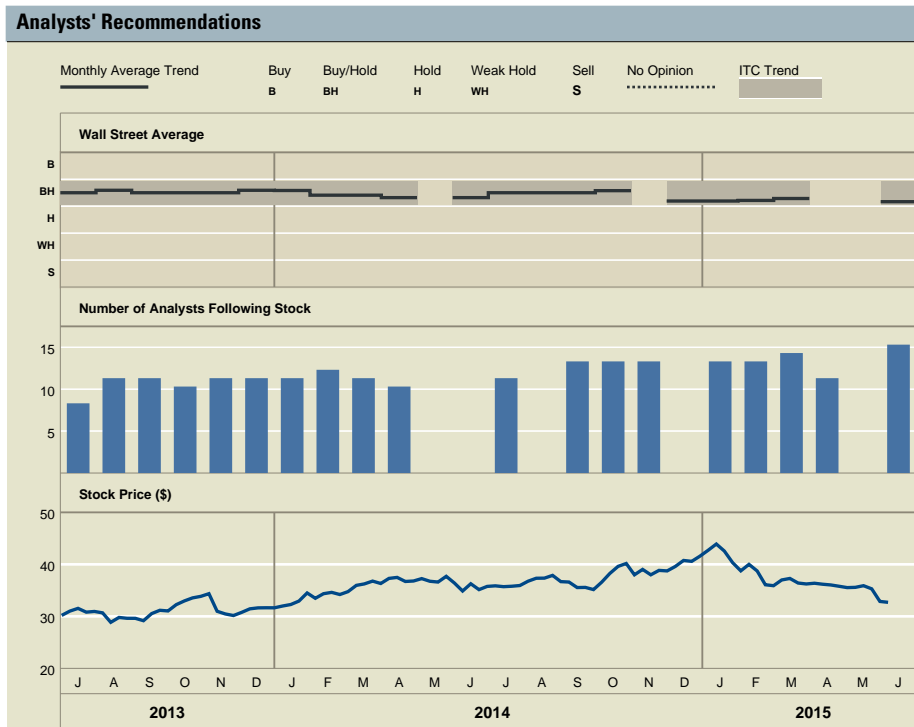
June 18, 2014

09:42 am ET ... ITC HOLDINGS CORP. (ITC 36.74) UNCHANGED, MORGAN STANLEY EXPECTS ROE POLICY CLARITY FOR ITC HOLDINGS... In a report published Wednesday, Morgan Stanley analyst Rajeev Lalwani reiterated an Overweight rating and \$44.00 price target on ITC Holdings (NYSE: ITC). In the report, Morgan Stanley noted, "The forum through which FERC addresses the ROE question remains unknown, but between both written orders and likely Commissioner statements, we believe investors will gain insight on the process for evaluating future rate and return issues. For the key New England ROE complaint case, using FERC precedent, we estimate the new base level to be

May 23, 2014

ITC Holdings Corp. announced that Daniel J. Oginsky has been promoted to executive vice president and general counsel. He previously served as senior vice president and general counsel. Mr. Oginsky is responsible for the legal affairs of the company and oversees ITC's Legal Department, which includes the legal, corporate secretary, real estate, contract administration and corporate compliance functions. Prior to joining ITC in 2004, Mr. Oginsky served in private practice in Washington, D.C. and Lansing, Michigan, with a primary focus on energy matters. While in private practice, Mr. Oginsky advised and advocated for clients on regulatory, administrative litigation, legislative, transactional, property tax and other matters.

ITC Holdings Corp



Wall Street Consensus Opinion

BUY/HOLD

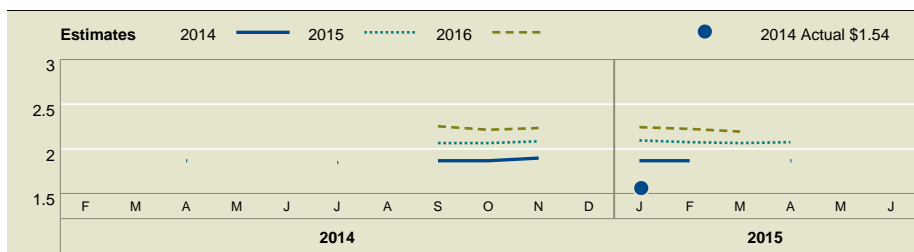
Companies Offering Coverage

- Argus Research Company
- Barclays
- Credit Suisse
- Deutsche Bank
- Evercore ISI
- Gabelli & Company, Inc.
- Goldman Sachs
- JP Morgan
- Morgan Stanley
- Morningstar Inc.
- U.S. Capital Advisors LLC
- UBS Investment Bank
- Wells Fargo Securities, LLC
- Wolfe Research, LLC.
- Wunderlich Securities Inc.

Of the total 15 companies following ITC, 15 analysts currently publish recommendations.

	No. of Recommendations	% of Total	1 Mo. Prior	3 Mos. Prior
Buy	3	20	0	4
Buy/Hold	3	20	0	2
Hold	8	53	0	8
Weak Hold	1	7	0	0
Sell	0	0	0	0
No Opinion	0	0	0	0
Total	15	100	0	14

Wall Street Consensus Estimates



Fiscal Years	Avg Est.	High Est.	Low Est.	# of Est.	Est. P/E
2016	2.19	2.45	1.90	14	14.9
2015	2.07	2.16	1.90	14	15.8
2016 vs. 2015	▲ 6%	▲ 13%	0%	0%	▼ -6%
Q2'16	NA	NA	NA	6	NM
Q2'15	0.53	0.55	0.52	6	61.7
Q2'16 vs. Q2'15	NA	NA	NA	0%	▼ -100%

Wall Street Consensus vs. Performance

For fiscal year 2015, analysts estimate that ITC will earn US\$ 2.07. For the 1st quarter of fiscal year 2015, ITC announced earnings per share of US\$ 0.43, representing 21% of the total annual estimate. For fiscal year 2016, analysts estimate that ITC's earnings per share will grow by 6% to US\$ 2.19.

A company's earnings outlook plays a major part in any investment decision. S&P Capital IQ organizes the earnings estimates of over 2,300 Wall Street analysts, and provides their consensus of earnings over the next two years, as well as how those earnings estimates have changed over time. Note that the information provided in relation to consensus estimates is not intended to predict actual results and should not be taken as a reliable indicator of future performance.

Glossary

S&P Capital IQ STARS

Since January 1, 1987, S&P Capital IQ Equity Research has ranked a universe of U.S. common stocks, ADRs (American Depositary Receipts), and ADSs (American Depositary Shares) based on a given equity's potential for future performance. Similarly, S&P Capital IQ Equity Research has ranked Asian and European equities since June 30, 2002. Under proprietary STARS (STock Appreciation Ranking System), S&P Capital IQ equity analysts rank equities according to their individual forecast of an equity's future total return potential versus the expected total return of a relevant benchmark (e.g., a regional index (S&P Asia 50 Index, S&P Europe 350® Index or S&P 500® Index)), based on a 12-month time horizon. STARS was designed to meet the needs of investors looking to put their investment decisions in perspective. Data used to assist in determining the STARS ranking may be the result of the analyst's own models as well as internal proprietary models resulting from dynamic data inputs.

S&P Capital IQ Quality Ranking

(also known as **S&P Capital IQ Earnings & Dividend Rankings**) - Growth and stability of earnings and dividends are deemed key elements in establishing S&P Capital IQ's earnings and dividend rankings for common stocks, which are designed to encapsulate the nature of this record in a single symbol. It should be noted, however, that the process also takes into consideration certain adjustments and modifications deemed desirable in establishing such rankings. The final score for each stock is measured against a scoring matrix determined by analysis of the scores of a large and representative sample of stocks. The range of scores in the array of this sample has been aligned with the following ladder of rankings:

A+ Highest	B Below Average
A High	B- Lower
A- Above Average	C Lowest
B+ Average	D In Reorganization
NR Not Ranked	

S&P Capital IQ EPS Estimates

S&P Capital IQ earnings per share (EPS) estimates reflect analyst projections of future EPS from continuing operations, and generally exclude various items that are viewed as special, non-recurring, or extraordinary. Also, S&P Capital IQ EPS estimates reflect either forecasts of S&P Capital IQ equity analysts; or, the consensus (average) EPS estimate, which are independently compiled by Capital IQ, a data provider to S&P Capital IQ Equity Research. Among the items typically excluded from EPS estimates are asset sale gains; impairment, restructuring or merger-related charges; legal and insurance settlements; in process research and development expenses; gains or losses on the extinguishment of debt; the cumulative effect of accounting changes; and earnings related to operations that have been classified by the company as discontinued. The inclusion of some items, such as stock option expense and recurring types of other charges, may vary, and depend on such factors as industry practice, analyst judgment, and the extent to which some types of data is disclosed by companies.

S&P Capital IQ Core Earnings

S&P Capital IQ Core Earnings is a uniform methodology for adjusting operating earnings by focusing on a company's after-tax earnings generated from its principal businesses. Included in the S&P Capital IQ definition are employee stock option grant expenses, pension costs, restructuring charges from ongoing operations, write-downs of depreciable or amortizable operating assets, purchased research and development, M&A related expenses and unrealized gains/losses from hedging activities. Excluded from the definition are pension gains, impairment of goodwill charges, gains or losses from asset sales, reversal of prior-year charges and provision from litigation or insurance settlements.

S&P Capital IQ 12-Month Target Price

The S&P Capital IQ equity analyst's projection of the market price a given security will command 12 months hence, based on a combination of intrinsic, relative, and private market valuation metrics, including S&P Capital IQ Fair Value.

S&P Capital IQ Equity Research

S&P Capital IQ Equity Research U.S. includes Standard & Poor's Investment Advisory Services LLC; Standard & Poor's Equity Research Services Europe includes McGraw-Hill Financial Research Europe Limited trading as S&P Capital IQ; Standard & Poor's Equity Research Services Asia includes: McGraw-Hill Financial Singapore Pte. Limited, Standard & Poor's Investment Advisory Services (HK) Limited, Standard & Poor's Malaysia Sdn Bhd, and Standard & Poor's Information Services (Australia) Pty Ltd.

Abbreviations Used in S&P Capital IQ Equity Research Reports

CAGR - Compound Annual Growth Rate
CAPEX - Capital Expenditures
CY - Calendar Year
DCF - Discounted Cash Flow
DDM - Dividend Discount Model

EBIT - Earnings Before Interest and Taxes
EBITDA - Earnings Before Interest, Taxes, Depreciation and Amortization
EPS - Earnings Per Share
EV - Enterprise Value
FCF - Free Cash Flow
FFO - Funds From Operations
FY - Fiscal Year
P/E - Price/Earnings
P/NAV - Price to Net Asset Value
PEG Ratio - P/E-to-Growth Ratio
PV - Present Value
R&D - Research & Development
ROCE - Return on Capital Employed
ROE - Return on Equity
ROI - Return on Investment
ROIC - Return on Invested Capital
ROA - Return on Assets
SG&A - Selling, General & Administrative Expenses
SOTP - Sum-of-The-Parts
WACC - Weighted Average Cost of Capital

Dividends on American Depositary Receipts (ADRs) and American Depositary Shares (ADSs) are net of taxes (paid in the country of origin).

S&P Capital IQ Qualitative Risk Assessment

Reflects an S&P Capital IQ equity analyst's view of a given company's operational risk, or the risk of a firm's ability to continue as an ongoing concern. The S&P Capital IQ Qualitative Risk Assessment is a relative ranking to the S&P U.S. STARS universe, and should be reflective of risk factors related to a company's operations, as opposed to risk and volatility measures associated with share prices. For an ETF this reflects on a capitalization-weighted basis, the average qualitative risk assessment assigned to holdings of the fund.

STARS Ranking system and definition:

★★★★★ 5-STARS (Strong Buy):

Total return is expected to outperform the total return of a relevant benchmark, by a wide margin over the coming 12 months, with shares rising in price on an absolute basis.

★★★★☆ 4-STARS (Buy):

Total return is expected to outperform the total return of a relevant benchmark over the coming 12 months, with shares rising in price on an absolute basis.

★★★☆☆ 3-STARS (Hold):

Total return is expected to closely approximate the total return of a relevant benchmark over the coming 12 months, with shares generally rising in price on an absolute basis.

★★☆☆☆ 2-STARS (Sell):

Total return is expected to underperform the total return of a relevant benchmark over the coming 12 months, and the share price not anticipated to show a gain.

★☆☆☆☆ 1-STAR (Strong Sell):

Total return is expected to underperform the total return of a relevant benchmark by a wide margin over the coming 12 months, with shares falling in price on an absolute basis.

Relevant benchmarks:

In North America, the relevant benchmark is the S&P 500 Index, in Europe and in Asia, the relevant benchmarks are the S&P Europe 350 Index and the S&P Asia 50 Index, respectively.

ITC Holdings Corp

Disclosures

S&P Capital IQ ranks stocks in accordance with the following ranking methodologies:

STARS Stock Reports:

S&P Capital IQ's qualitative STARS recommendations are determined and assigned by S&P Capital IQ equity analysts. For reports containing STARS recommendations refer to the Glossary section of the report for detailed methodology and the definition of STARS rankings.

Quantitative Stock Reports:

S&P Capital IQ's quantitative evaluations are derived from S&P Capital IQ's proprietary Fair Value quantitative ranking model. The Fair Value Ranking methodology is a relative ranking methodology. As a quantitative model, Fair Value relies on history and consensus estimates and does not introduce an element of subjectivity. Some Quantitative Stock Reports contain Buy, Hold and Sell recommendations. Reports that do not contain a recommendation may or may not contain ranking information. For reports containing a recommendation or ranking information refer to the Glossary Section of this report for more information, including a detailed description of the methodology and definition of S&P Quality Ranking and S&P Fair Value Rank.

STARS Stock Reports and Quantitative Stock Reports:

The methodologies used in STARS Stock Reports and Quantitative Stock Reports (collectively, the "S&P Capital IQ's Research Reports" or "Research Reports") reflect different criteria, assumptions and analytical methods and may have differing recommendations. S&P Capital IQ believes that the methodologies and data used to generate the different types of Research Reports are reasonable and appropriate. Generally, S&P Capital IQ does not generate reports with different ranking methodologies for the same issuer. However, in the event that different methodologies or data are used on the analysis of an issuer, the methodologies may lead to different views or recommendations on the issuer, which may at times result in contradicting assessments of an issuer. S&P Capital IQ reserves the right to alter, replace or vary models, methodologies or assumptions from time to time and without notice to clients.

STARS Stock Reports:

S&P Capital IQ Global STARS Distribution as of March 31, 2015

Ranking	North America	Europe	Asia	Global
Buy	37.6%	21.0%	33.7%	34.4%
Hold	50.0%	48.0%	38.8%	48.4%
Sell	12.4%	31.0%	27.5%	17.2%
Total	100%	100%	100%	100%

STARS Stock Reports are prepared by the equity research analysts of Standard & Poor's Investment Advisory Services LLC ("SPIAS"), McGraw-Hill Financial Research Europe Limited ("MHFRE"), and Standard & Poor's Malaysia Sdn Bhd ("S&P Malaysia"), each a division of S&P Capital IQ. All of the views expressed in STARS Stock Reports accurately reflect the research analyst's personal views regarding any and all of the subject securities or issuers. Analysts generally update stock reports at least four times each year.

Quantitative Stock Reports:

The rankings for Quantitative reports have a fixed distribution based on relative weightings as described in the Glossary section of the report. Quantitative Stock Reports are prepared by the equity research group of SPIAS. All of the views expressed in these reports reflect S&P Capital IQ's research models output regarding any and all of the subject securities or issuers. Quantitative Stock Reports are updated weekly and rely on the availability of data and therefore SPIAS do not provide a report when sufficient data is not available.

STARS Stock Reports and Quantitative Stock Reports:

No part of analyst compensation and SPIAS', MHFRE's or S&P Malaysia's compensation was, is, or will be, directly or indirectly, related to the specific recommendations or views expressed in a Research Report.

About S&P Capital IQ's Distributors:

S&P Capital IQ's Research Reports have been prepared by Global Markets Intelligence ("GMI"), a business unit of S&P Capital IQ. In the United States, Research Reports are prepared and issued by SPIAS. In the European Economic Area ("EEA") States, Research Reports are distributed by MHFRE, which is authorized and regulated by the Financial Conduct Authority in the United Kingdom. Under and subject to the Markets in Financial Instruments Directive ("MiFID"), MHFRE is entitled to exercise a passport right to provide cross border investment advice into EEA States. MHFRE exercises its MiFID right to passport investment advice including the Research Reports into EEA States. In Hong Kong, Research Reports are issued by

Standard & Poor's Investment Advisory Services (HK) Limited ("SPIAS HK"), which is regulated by the Hong Kong Securities Futures Commission; in Singapore, by McGraw-Hill Financial Singapore Pte. Limited ("MHFSPL"), which is regulated by the Monetary Authority of Singapore; Research Reports are distributed in Malaysia, by S&P Malaysia, which is regulated by the Securities Commission of Malaysia; in Australia, by Standard & Poor's Information Services (Australia) Pty Ltd ("SPIS"), which is regulated by the Australian Securities & Investments Commission; and in Japan, by McGraw-Hill Financial Japan KK ("MHF Japan"), which is registered by Kanto Financial Bureau. SPIAS, MHFRE, SPIAS HK, MHFSPL, S&P Malaysia, SPIS and MHF Japan, each a wholly owned subsidiary of McGraw Hill Financial, Inc. operate under the GMI brand.

S&P Capital IQ and its affiliates provide a wide range of services to, or relating to, many organizations, including issuers of securities, investment advisers, broker-dealers, investment banks, other financial institutions and financial intermediaries, and accordingly may receive fees or other economic benefits from those organizations, including organizations whose securities or services they may recommend, rate, include in model portfolios, evaluate or otherwise address.

For details on the S&P Capital IQ research objectivity and conflict-of-interest policies, please visit: <https://www.spcapitaliq.com/disclaimers/s-p-capital-iq-research-reports>

For a list of companies mentioned in a Research Report for which McGraw Hill Financial, Inc. and/or one of its affiliates own 1% or more of common equity securities and for a list of companies mentioned in a Research Report that own more than 5% of the common equity securities of McGraw Hill Financial, Inc. and/or one of its affiliates, please visit: www.SPcapitaliq.com/issuer-stock-ownership

S&P Capital IQ and/or one of its affiliates has performed services for and received compensation from this company during the past twelve months.

General Disclosures

Notice to all jurisdictions:

Where S&P Capital IQ's Research Reports are made available in a language other than English and in the case of inconsistencies between the English and translated versions of a Research Report, the English version will control and supersede any ambiguities associated with any part or section of a Research Report that has been issued in a foreign language. Neither S&P Capital IQ nor its affiliates guarantee the accuracy of the translation. Assumptions, opinions and estimates constitute our judgment as of the date of this material and are subject to change without notice.

Past performance is not necessarily indicative of future results.

No content (including ratings, credit-related analyses and data, valuations, model, software or other application or output therefrom) or any part thereof (Content) may be modified, reverse engineered, reproduced or distributed in any form by any means, or stored in a database or retrieval system, without the prior written permission of Standard & Poor's Financial Services LLC or its affiliates (collectively, S&P). The Content shall not be used for any unlawful or unauthorized purposes. S&P and any third-party providers, as well as their directors, officers, shareholders, employees or agents (collectively S&P Parties) do not guarantee the accuracy, completeness, timeliness or availability of the Content. S&P Parties are not responsible for any errors or omissions (negligent or otherwise), regardless of the cause, for the results obtained from the use of the Content, or for the security or maintenance of any data input by the user. The Content is provided on an "as is" basis. S&P PARTIES DISCLAIM ANY AND ALL EXPRESS OR IMPLIED WARRANTIES, INCLUDING, BUT NOT LIMITED TO, ANY WARRANTIES OF MERCHANTABILITY OR FITNESS FOR A PARTICULAR PURPOSE OR USE, FREEDOM FROM BUGS, SOFTWARE ERRORS OR DEFECTS, THAT THE CONTENT'S FUNCTIONING WILL BE UNINTERRUPTED OR THAT THE CONTENT WILL OPERATE WITH ANY SOFTWARE OR HARDWARE CONFIGURATION. In no event shall S&P Parties be liable to any party for any direct, indirect, incidental, exemplary, compensatory, punitive, special or consequential damages, costs, expenses, legal fees, or losses (including, without limitation, lost income or lost profits and opportunity costs or losses caused by negligence) in connection with any use of the Content even if advised of the possibility of such damages.

While S&P Capital IQ has obtained information from sources it believes to be reliable, S&P Capital IQ does not perform an audit and undertakes no duty of due diligence or independent verification of any information it receives.

S&P keeps certain activities of its business units separate from each other in order to preserve the independence and objectivity of their respective activities. As a result, certain business units of S&P may have information that is not available to other S&P business units. S&P has established policies and procedures to maintain the

ITC Holdings Corp

confidentiality of certain non-public information received in connection with each analytical process.

Research Reports are not intended to be investment advice and do not constitute any form of invitation or inducement by S&P Capital IQ to engage in investment activity. This material is not intended as an offer or solicitation for the purchase or sale of any security or other financial instrument. Securities, financial instruments or strategies mentioned herein may not be suitable for all investors and this material is not intended for any specific investor and does not take into account an investor's particular investment objectives, financial situations or needs. Any opinions expressed herein are given in good faith, are subject to change without notice, and are only current as of the stated date of their issue. Prices, values, or income from any securities or investments mentioned in this report may fluctuate, and an investor may, upon selling an investment, lose a portion of, or all of the principal amount invested. Where an investment is described as being likely to yield income, please note that the amount of income that the investor will receive from such an investment may fluctuate. Where an investment or security is denominated in a different currency to the investor's chosen currency, changes in rates of exchange may have an adverse effect on the value, price or income of or from that investment to the investor. The information contained in Research Reports does not constitute advice on the tax consequences of making any particular investment decision. Before acting on any recommendation in this material, you should consider whether it is suitable for your particular circumstances and, if necessary, seek professional advice.

Additional information on a subject company may be available upon request.

Notice to all Non U.S. Residents:

S&P Capital IQ's Research Reports may be distributed in certain localities, countries and/or jurisdictions ("Territories") by independent third parties or independent intermediaries and/or distributors (the "Intermediaries" or "Distributors"). Intermediaries are not acting as agents or representatives of S&P Capital IQ. In Territories where an Intermediary distributes S&P Capital IQ's Research Reports, the Intermediary, and not S&P Capital IQ, is solely responsible for complying with all applicable regulations, laws, rules, circulars, codes and guidelines established by local and/or regional regulatory authorities, including laws in connection with the distribution of third-party Research Reports, licensing requirements, supervisory and record keeping obligations that the Intermediary may have under the applicable laws and regulations of the territories where it distributes the Research Reports.

Each Research Report is not directed to, or intended for distribution to or use by, any person or entity who is a citizen or resident of or located in any locality, state, country or other jurisdiction where such distribution, publication, availability or use would be contrary to law or regulation or which would subject S&P Capital IQ or its affiliates to any registration or licensing requirements in such jurisdiction.

Each Research Report is not directed to, or intended for distribution to or use by, any person or entity who is not in a class qualified to receive Research Reports (e.g., a qualified person and/or investor), as defined by the local laws or regulations in the country or jurisdiction where the person is domiciled, a citizen or resident of, or the entity is legally registered or domiciled.

S&P Capital IQ's Research Reports are not intended for distribution in or directed to entities, residents or investors in: Burma, Cuba, Crimea, Czech Republic, Hungary, Iran, Kuwait, Lebanon, North Korea, Portugal, Romania, Sudan, South Korea, Slovakia, Syria, Taiwan, Thailand, Turkey.

For residents of Australia: Research Reports are distributed in Australia by SPIS. Any express or implied opinion contained in a Research Report is limited to "General Advice" and based solely on consideration of the investment merits of the financial product(s) alone. The information in a Research Report has not been prepared for use by retail investors and has been prepared without taking account of any particular investor's financial or investment objectives, financial situation or needs. Before acting on any advice, any investor using the advice should consider its appropriateness having regard to their own or their clients' objectives, financial situation and needs. Investors should obtain a Product Disclosure Statement relating to the product and consider the statement before making any decision or recommendation about whether to acquire the product. Each opinion must be weighed solely as one factor in any investment decision made by or on behalf of any adviser and any such adviser must accordingly make their own assessment taking into account an individual's particular circumstances.

SPIS holds an Australian Financial Services License Number 258896. Please refer to the SPIS Financial Services Guide for more information at www.spcapitaliq.com/financialservicesguide

More information about the written criteria and methodologies for the generation of Research Reports and historical information for Research Reports for the past 12

months are available by contacting S&P Capital IQ Client Services Department at 61-1300-792-553 or via e-mail at clientsupport@standardandpoors.com or clientsupport@sandp.com.

For residents of Bahamas: The Intermediary, and not S&P Capital IQ, is solely responsible for complying with licensing requirements under the Securities Industry Act of 1999 and the Securities Industry Regulations of 2000 of The Bahamas, when distributing Research Reports to members of the public in The Bahamas. The Intermediary is also solely responsible for providing any required disclosures under applicable securities laws and regulations to its Bahamian clients, including but not limited to disclosing whether the Intermediary: (i) has a reasonable basis for specific investment recommendations, and the recommended security's price or price range at the time of the recommendation to the client; (ii) makes a market in the recommended security; (iii) its directors, officers or principal shareholders have a current or contingent financial interest in the recommended security, unless the interest is nominal; (iv) participated in a public offering of the recommended security in the last two (2) years; and (v) has disclosed any conflict of interest between it and the issuer of the recommended security.

For residents of Bermuda: The Bermuda Monetary Authority or the Registrar of Companies in Bermuda has not approved the Research Reports and any representation, explicit or implicit, is prohibited.

For residents of Brazil: Research reports are distributed by S&P Capital IQ and in compliance with Instruction 483 enacted by Comissão de Valores Mobiliários (the Brazilian Securities Commission) dated as of July 6, 2010, the analyst (where applicable) who prepares a Research Report or a report extract affirms: (i) that all the views expressed herein and/or in a Research Report accurately reflect his or her personal views about the securities and issuers; (ii) that all recommendations issued by him or her were independently produced, including from the opinion of the entity in which he or she is an employee. S&P Capital IQ is of the opinion its Research Reports have been prepared in accordance with section 17, II of Instruction 483. The Distributor of the Research Report is responsible for disclosing any circumstances that may impact the independence of S&P Capital IQ's Research Report, in accordance with section 17, II of Instruction 483.

For residents of British Virgin Islands: All products and services offered by S&P Capital IQ and its affiliates are provided or performed, outside of the British Virgin Islands. The intended recipients of the Research Reports are (i) persons who are not members of the public for the purposes of the Securities and Investment Business Act, 2010 ("SIBA"); (ii) persons who are professional services providers to the British Virgin Islands business companies for the purposes of SIBA; and (iii) any other person who is given the Research Reports by a person licensed as an investment advisor in the British Virgin Islands. If you are in any doubt as to whether you are the intended recipient of this document, please consult your licensed investment advisor.

For residents of Canada: Canadian investors should be aware that any specific securities discussed in a Research Report can only be purchased in Canada through a Canadian registered dealer and, if such securities are not available in the secondary market, they can only be purchased by eligible private placement purchasers on a basis that is exempt from the prospectus requirements of Canadian securities law and will be subject to resale restrictions. Information in Research Reports may not be suitable or appropriate for Canadian investors.

For residents of Chile: S&P Capital IQ shall not be acting as an Intermediary of any securities referred to in a Research Report. S&P Capital IQ (and its affiliates) is not registered with, and such securities may not be registered in the Securities Registry maintained by the Superintendencia de Valores y Seguros de Chile (Chilean Securities and Insurance Superintendencia or "SVS") pursuant to the Chilean Securities Market Law 18045. Accordingly, investment research presented in a Research Report is not intended to constitute a public or private offer of securities in Chile within the meaning of Article 4 of the Chilean Securities Market Law 18045, as amended and restated, and supplemental rules enacted thereunder.

For residents of China: S&P Capital IQ's Research Reports are not distributed in or directed to residents in The People's Republic of China. Neither S&P Capital IQ nor its affiliates target investors in China.

For residents of Colombia: This information and/or information contained in Research Reports is not intended or should not be construed as constituting information delivery to the Colombian Securities Market under Colombian Law.

For residents of Czech Republic: The Intermediary, and not S&P Capital IQ, is solely responsible for complying with licensing requirements under the Capital Markets Act (Act No. 256/2004 Coll., as amended), implementing Directive 2004/39/EC of the European Parliament and of the Council of 21 April, 2004 on markets in financial instruments amending Council Directives 85/611/EEC and 93/6/EEC and Directive 2000/12/EC of the European Parliament and of the Council and repealing Council Directive 93/22/EEC and its implementing directives, and Directive 2003/125/EC implementing Directive 2003/6/EC as regards the fair presentation of investment

ITC Holdings Corp

recommendations and the disclosure of conflicts of interest; and the Civil Code (Act No. 40/1964 Coll., as amended) as regards the distance financial contract regulation protecting the consumers.

For residents of Dubai (DIFC): The information contained in Research Reports distributed by S&P Capital IQ is intended for investors who are "professional clients", as defined in Rule 2.3.2(2) of the Conduct of Business Module (COB) of the DFSA Rulebook.

For residents of the European Economic Area (EEA): Research Reports have been approved for distribution in the EEA listed here: Austria; Belgium; Bulgaria; Cyprus; Czech Republic (see further disclosure above); Denmark; Estonia; Finland; France (see further disclosure below); Germany; Gibraltar; Greece (see further disclosure below); Hungary (see further disclosure below); Iceland; Ireland; Italy; Latvia; Liechtenstein; Lithuania; Luxembourg; Malta (see further disclosure below); Netherlands; Norway; Poland; Portugal; Romania; Slovakia (see further disclosure below); Slovenia; Spain (see further disclosure below); Sweden and United Kingdom (see further disclosure below), as investment research by MHFRE, which is authorized and regulated by the Financial Conduct Authority in the UK. S&P Capital IQ's Stock Reports are to be read in conjunction with "Your Guide to S&P Capital IQ's Stock Reports" which can be found at: www.spcapitaliq.com/stockreportguide.

More information about the written criteria and methodologies for the generation of Research Reports and historical information for Research Reports for the past 12 months are available by contacting S&P Capital IQ Client Services Department at 800-523-4534 or via e-mail at: clientsupport@standardandpoors.com or clientsupport@sandp.com.

For residents of Guernsey, Isle of Man and Jersey: The Research Reports provide by S&P Capital IQ serve to assist the Intermediary in determining the advice it provides to its clients, but are not intended as advice to any of the Intermediary's clients, and the Intermediary, and not S&P Capital IQ, will be solely responsible for the provision of investment advice to the client. Independent investment advice should be sought by persons in their capacity as investors or potential investors and the Intermediary will be solely responsible for complying with any applicable regulatory obligations relating to the distribution of investment research.

For residents of France: The Intermediary, and not S&P Capital IQ, is solely responsible for complying with the rules related to the distribution of investment recommendations as specified in the Financial Code and the Autorité des Marchés Financiers rule book.

For residents of Greece: S&P Capital IQ Research Reports should only be used for the purposes of investment research, and should not be interpreted as or be used to provide investment advice or as part of any offer to the public of any specific security or financial instrument.

For residents of Hong Kong: Information in the Research Reports shall not be construed to imply any relationship, advisory or otherwise, between S&P and the recipient user of the research report unless expressly agreed by S&P Capital IQ. S&P Capital IQ is not acting nor should it be deemed to be acting, as a "fiduciary" or as an "investment manager" or "investment advisor" to any recipient of this information unless expressly agreed by S&P Capital IQ. The Distributor of the Research Reports will be solely responsible for describing its role to its clients with respect to the distribution of S&P Capital IQ's Research Reports.

For residents of Hungary: The Intermediary, and not S&P Capital IQ, is solely responsible for complying with the rules related to data protection requirements as set out in Act CXII of 2011 on the Right of Informational Self-Determination and on Freedom of information; and with Act CLV. of 1997 on Consumer Protection and with Act CXXXVIII of 2007 on Investment services.

For residents of India: Residents of India should consult their financial and legal advisers regarding the suitability of any of S&P Capital IQ's services and products. S&P Capital IQ does not intend to utilize the Research Report service to invite or carry out any business activities with S&P Capital IQ. Research Reports provided by S&P Capital IQ serve to assist the Intermediary in determining the advice it provides to its clients, but are not intended as advice to the Intermediary and to any of the Intermediary's clients and the Intermediary will be solely responsible for the provision of investment advice to the client.

For residents of Indonesia: Research Reports do not constitute an offering document and it should not be construed as an offer of securities in Indonesia, and any such securities will only be offered or sold through a financial institution.

For residents of Israel: Research reports are intended only for distribution to "Qualified Investors", as defined in the Schedule to Israel's Regulation of Investment Advice, Investment Marketing and Portfolio Management Law of 1995. All other persons who are not Qualified Investors under Israeli law should seek additional

investment advice from their financial advisers. The relevant analyst declares that the views expressed in a particular Research Report faithfully reflect the analyst's personal views regarding the securities under review and the issuer of the securities.

For residents of Japan: Research Reports are intended only for distribution to "Asset Management Firms".

For residents of Kazakhstan: Research Reports are not intended for distribution to the public in Kazakhstan. Any distribution to specific persons is the sole responsibility of the Distributor and the Distributor, and not S&P Capital IQ, is responsible for complying with all local regulations, including but not limited to advertising requirements related to public solicitation.

For residents of Malta: The Distributor of Research Reports in Malta, is solely responsible for ensuring that the investment research produced by S&P Capital IQ and proposed to be disseminated in or from within Malta is reviewed for compliance with the investment services rules issued by the Malta Financial Services Authority in terms of the Investment Services Act, Cap 370 of the laws of Malta.

For residents of Mexico: S&P Capital IQ is not regulated or supervised by the Mexican National Banking and Securities Commission ("CNBV"). S&P Capital IQ has a licensed rating agency affiliate in Mexico (Standard & Poor's, S.A. De C.V.), of which S&P maintains firewalls and seeks to avoid conflicts of interest, pursuant to approved policies. Research Reports on securities that are not registered with the National Securities Registry maintained by the Mexican National Securities Registry are intended only for distribution to qualified, institutional investors or to any other investors to whom distribution the S&P Research is permissible under Mexican law.

For residents of Monaco: The Intermediary, and not S&P Capital IQ, will be solely responsible for providing copies of S&P Capital IQ Research Reports to the appropriate Monegasque regulator prior to distributing to its clients.

For residents of Morocco: Research Reports are intended for distribution only to professional investors.

For residents of Peru: S&P Capital IQ's Research Reports shall not, under any circumstances, be considered an invitation to take deposits or funds from the public, under any mechanism, or to carry on any activities that may be prohibited by Peruvian law. The Intermediary also agrees that the use of S&P Capital IQ's Research Reports shall not be used by Intermediary to solicit an investment in the securities that are the subject of the Research Report in any way that may be prohibited by Peruvian law.

For residents of Qatar: The Distributor, and not S&P Capital IQ, is responsible for complying with all relevant licensing requirements as set forth by the Qatar Financial Markets Authority or the Qatar Central Bank, and with all relevant rules and regulations set out in the Qatar Financial Markets Authority's rule book, including third party branded investment research distribution of securities that are admitted for trading on a Qatari securities exchange (Admitted Securities).

For residents of Russia: Research Reports on financial instruments are intended for "qualified investors", as defined in the Securities market law of the Russian Federation dated 22 April 1996, as amended, only.

For residents of The Kingdom of Saudi Arabia: S&P Capital IQ and its affiliates do not distribute Research Reports in the Kingdom of Saudi Arabia. Residents of Saudi Arabia should be aware that the Distributor of S&P Capital IQ's Research Reports may not be permitted to distribute investment research either: (i) from a permanent place of business in or otherwise within the territory of the Kingdom of Saudi Arabia; or (ii) to an investor in the Kingdom of Saudi Arabia unless that investor is a Capital Market Authority authorized investor or the Saudi Arabian Monetary Agency.

When a Distributor disseminates S&P Capital IQ's Research Reports in the Kingdom of Saudi Arabia, the Distributor, and not S&P Capital IQ, is solely responsible for approving the contents of Research Reports and complying with licensing requirements and authorizations of the Saudi Arabian Capital Market Authority's ("CMA"), including CMA's Authorized Persons Regulations concerning securities advertisements.

S&P does not conduct a securities business in the Kingdom of Saudi Arabia and the Distributor, and not S&P Capital IQ, assumes all responsibilities and liabilities for distributing Research Reports in the Kingdom of Saudi Arabia. **Research Reports are not intended to be investment advice and do not constitute any form of invitation or inducement by S&P Capital IQ to engage in an investment activity in the Kingdom of Saudi Arabia.** S&P Capital IQ does not communicate directly with a Distributor's customers and a Distributor's customers should not contact S&P Capital IQ directly regarding any information or data provided in Research Reports.

For residents of Singapore: Recipients of the Research reports in Singapore should contact MHFSPL in respect to any matters arising from, or in connection with, the

ITC Holdings Corp

Research Reports and MHFSPL accepts all legal responsibility for the contents of the Research Reports. When reports are distributed by Intermediaries in Singapore, the Intermediary, and not S&P Capital IQ, is solely responsible for ensuring that the recipients of the Research Reports understand the information contained in the Research Reports and that such information is suitable based on the customer's profile and investment objectives.

STANDARD & POOR'S, S&P, S&P 500, S&P EUROPE 350 and STARS are registered trademarks of Standard & Poor's Financial Services LLC. S&P CAPITAL IQ is a trademark of Standard & Poor's Financial Services LLC.

For residents of Slovak Republic: The Intermediary, and not S&P Capital IQ, is solely responsible for complying with the rules related to the Slovak Securities Act (Act No. 566/2001 Coll., as amended), implementing Directive 2004/39/EC of the European Parliament and of the Council of 21 April 2004 on markets in financial instruments amending Council Directives 85/611/EEC and 93/6/EEC and Directive 2000/12/EC of the European Parliament and of the Council and repealing Council Directive 93/22/EEC and its implementing directives, and Directive 2003/125/EC implementing Directive 2003/6/EC as regards the fair presentation of investment recommendations and the disclosure of conflicts of interest; and with the Slovak Act on Consumer Protection in Distance Financial Services Contracts (Act No. 266/2005 Coll., as amended).

For residents of Spain: Certain of S&P Capital IQ's equity Research Reports may be considered to be marketing communications for purposes of Spanish law.

For residents of Switzerland: Research reports are only directed at and should only be relied on by investors outside of the EEA or investors who are inside the EEA and who have professional experience in matters relating to investments or who are high net worth investors, as defined in Article 19(5) or Article 49(2) (a) to (d) of the UK Financial Services and Markets Act 2000 (Financial Promotion) Order 2005, respectively. S&P Capital IQ's Stock Reports are to be read in conjunction with "Your Guide to S&P Capital IQ's Stock Reports" which can be found at www.standardandpoors.com/stockreportguide. For some clients, Research reports have been prepared by S&P Capital IQ and/or one of its affiliates, and redistributed by the client.

For residents of the United Arab Emirates (UAE): S&P Capital IQ and its affiliates neither undertake banking, financial, or investment consultations business in or into the UAE within the meaning of the Central Bank Board of Directors' Resolution No. 164/8/94 regarding the regulations for investment companies nor provides financial analysis or consultation services in or into the UAE within the meaning of UAE SECURITIES AND COMMODITIES AUTHORITY DECISION NO. 48/R OF 2008 concerning financial consultation and financial analysis.

Investment research distributed by S&P Capital IQ and its affiliates is not intended to amount to an offer of securities within the meaning of DIFC Law NO. 12 OF 2004 (the DIFC Markets Law) or the equivalent laws, rules and regulations made by the Central Bank of the UAE and their Emirates Securities and Commodities Authority. Neither the Dubai Financial Services Authority, the UAE Securities nor Commodities Authority of the Central Bank of the UAE has reviewed or verified any of the information provided in a Research Report or through any service provided by S&P Capital IQ or its affiliates, or has any responsibility for it.

If a recipient of Research Report does not understand any of the contents of the Research Report, the recipient should contact a financial advisor. Users of extracts of investment Research Reports should be aware that if they are distributed in the UAE by an Intermediary, the Intermediary is solely responsible for the distribution and contents of the investment research in the UAE.

For residents of the United Kingdom: In the United Kingdom Research Reports are approved and/or communicated by MHFRE which is authorized and regulated by the Financial Conduct Authority for the conduct of investment business in the UK. Research Reports are only directed at and should only be relied on by investors outside of the UK or investors who are in the UK if the investor is a "professional client" as defined by the Financial Conduct Authority. MHFRE may not distribute Research Reports to "retail clients" in the UK as defined by the Financial Conduct Authority. S&P Capital IQ's Stock Reports are to be read in conjunction with "Your Guide to S&P Capital IQ's Stock Reports" which can be found at www.spcapitaliq.com/stockreportguide.

For residents of Uruguay: S&P Capital IQ or its affiliates are not, individually a risk assessment entity registered with the Central Bank of Uruguay, and S&P Capital IQ's Research Reports do not constitute a risk assessment. Investment research presented in a Research Report is not intended to constitute a public or private offer of securities in Uruguay. S&P Capital IQ's Research Reports are not intended for worldwide distribution, as such, and are not published to Uruguayan clients in Spanish.

For residents of Venezuela: Research Reports can only be distributed in Venezuela by an investment advisor, duly licensed under Venezuelan law. The Distributor of the Research Reports, and not S&P Capital IQ, is solely responsible for complying with licensing requirements.

Copyright © 2015 Standard & Poor's Financial Services LLC. All rights reserved.

Redistribution or reproduction is prohibited without written permission. Copyright © 2015 Standard & Poor's Financial Services LLC. STANDARD & POOR'S, S&P, S&P 500, S&P CAPITAL IQ, S&P EUROPE 350 and STARS are registered trademarks of Standard & Poor's Financial Services LLC.