

SEMICH NAIC MODEL CLUB VALUATION REPORT Thursday, May 19, 2016

SE-Michigan Model Club

Reports Spreadsheet Help

Valuation (NAV) for 05/19/2016

	Shares Held	Cost Basis per Share	Total Cost Basis	Price per Share	Market Value	Unrealized Gain/(Loss)	Percent of Total
Air Lease Corp (AL)	321.3814	36.8617	11,846.66	28.9100	9,291.14	(2,555.52)	6.8%
Apple Inc (AAPL)	163.4030	57.2849	9,360.52	94.2000	15,392.56	6,032.04	11.2%
Chipotle Mexican Grill Inc (CMG)	11.2852	555.7796	6,272.09	450.6400	5,085.57	(1,186.52)	3.7%
Cognizant Technology Solutions Corp (CTSH)	386.4592	40.0782	15,488.58	62.0100	23,964.33	8,475.75	17.5%
Fastenal Co (FAST)	173.0150	41.4023	7,163.22	44.5100	7,700.90	537.68	5.6%
Gilead Science (GILD)	134.2132	111.3212	14,940.77	82.1400	11,024.27	(3,916.50)	8.1%
LKQ Corp (LKQ)	667.0778	19.2348	12,831.12	31.4600	20,986.27	8,155.15	15.3%
Priceline Group Inc (PCLN)	13.9132	1,232.9927	17,154.85	1,250.3100	17,395.79	240.94	12.7%
Skyworks Solution (SWKS)	120.0882	83.8638	10,071.05	62.8000	7,541.54	(2,529.51)	5.5%
T Rowe Price Group Inc (TROW)	131.6018	80.9055	10,647.31	73.7400	9,704.32	(942.99)	7.1%
VISA Inc (V)	97.2507	73.0859	7,107.66	76.8800	7,476.63	368.97	5.5%
			122,883.83		135,563.32	12,679.49	99.1%

Cash Account	Total Cost Basis	Market Value	Unrealized Gain/(Loss)	Percent of Total
Folio Investing	1,248.24	1,248.24	0.00	0.9%
Suspense	0.01	0.01	0.00	0.0%
	1,248.25	1,248.25	0.00	0.9%
Total Securities and Cash Accounts	124,132.08	136,811.57	12,679.49	100.0%

Total Number of Valuation Units to Date 5,995.220961

Value of One Unit \$ 22.820105

Club Dashboards: SEMichigan

Edit

SouthEast Michigan NAIC Model Club Sponsored by Southeastern Chapter BetterInvesting

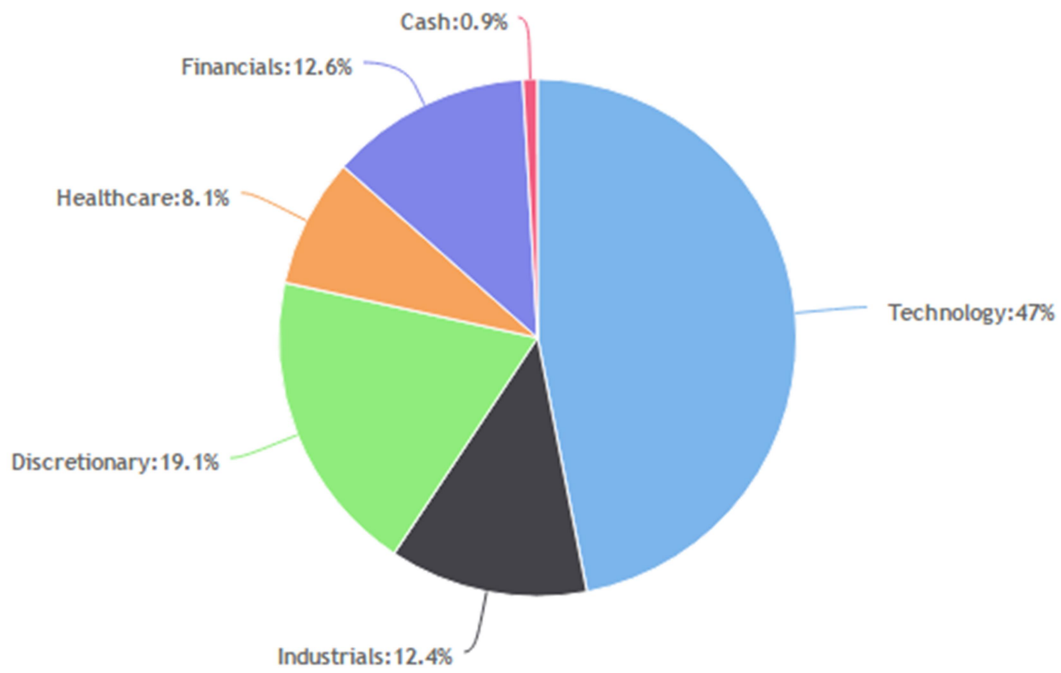
This dashboard is public and is available for other Manifest members to view at:

<https://www.manifestinvesting.com/dashboards/public/SEMIModClub>

MIPAR	7.1%
Sweet Spot	12.1% - 17.1%

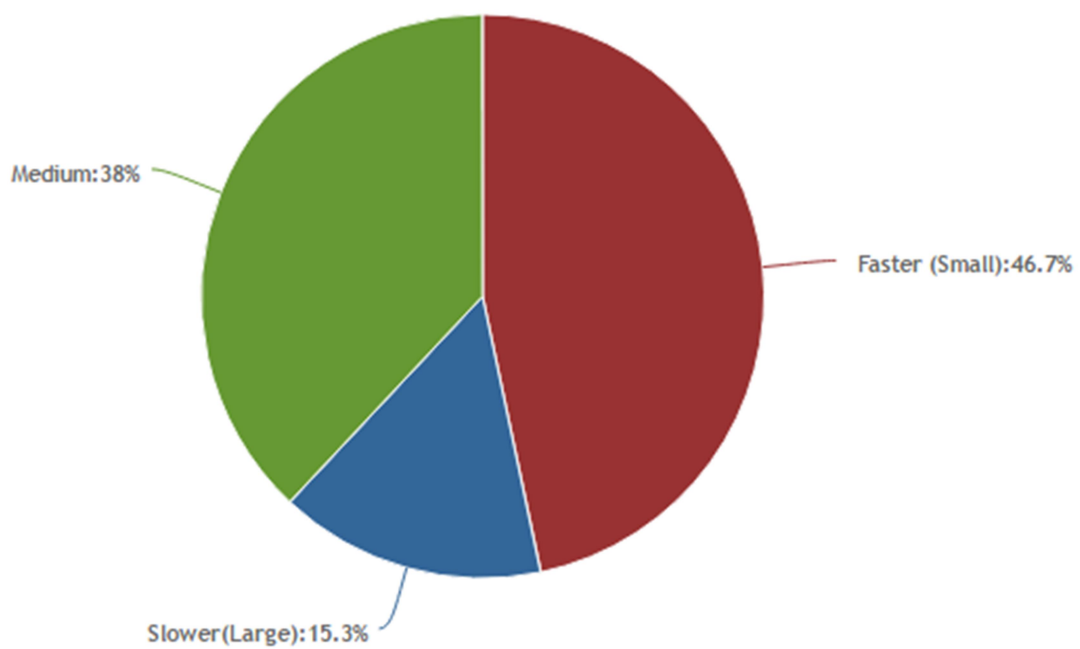
05/20/2016												
Company	Symbol	Shares	Price	Value	% of Total	Growth	Proj P/E	Proj Yield	Fin Str	EPS Stab	Qty	PAR
Air Lease*	AL	321.38	\$28.91	\$9,291.14	6.8%	16.4%	12.0	0.4%	52%	85	88	20.9%
Skyworks Solutions	SWKS	120.09	\$62.80	\$7,541.54	5.5%	12.5%	20.0	0.8%	74%	41	94	15.9%
Gilead Sciences	GILD	134.21	\$82.14	\$11,024.27	8.1%	4.3%	11.0	2.0%	83%	71	87	15.9%
Apple	AAPL	163.40	\$94.20	\$15,392.56	11.3%	8.2%	12.0	2.2%	98%	80	100	15.7%
Priceline.com	PCLN	13.91	\$1,250.31	\$17,395.81	12.7%	14.5%	20.0	0.0%	97%	82	98	14.3%
Chipotle Mexican Grill	CMG	11.29	\$450.64	\$5,085.57	3.7%	14.7%	29.0	0.0%	85%	72	99	14.2%
Cognizant Technology	CTSH	386.46	\$62.01	\$23,964.33	17.5%	13.4%	19.0	0.0%	99%	100	99	12.5%
LKQ Corp	LKQ	667.08	\$31.46	\$20,986.27	15.3%	10.7%	20.0	0.0%	69%	94	95	10.8%
Visa Inc.	V	97.25	\$76.88	\$7,476.64	5.5%	9.6%	28.0	0.9%	98%	77	98	10.3%
Fastenal	FAST	173.02	\$44.51	\$7,700.90	5.6%	8.2%	23.0	2.6%	97%	95	93	9.8%
Price T. Rowe	TROW	131.60	\$73.74	\$9,704.32	7.1%	4.4%	16.0	2.9%	95%	80	91	7.1%
Cash				\$1,248.24	0.9%			0.7%				0.7%
Averages				\$136,811.58		10.9%	18.3	0.9%	87%	84	95.5	13.2%

Sector Diversification



Size Diversification

based on Sales Growth Forecast



SEMICH NAIC MODEL CLUB VALUATION REPORT Thursday, May 19, 2016
SE-Michigan Model Club

Investment Performance

02/20/2004 to 05/19/2016 ☐ Show All

Name	Shares	Market Value	Percent of Portfolio	Return Since	Annualized Internal Rate of Return
LKQ Corp (LKQ)	667.0778	20,986.27	15.5%	05/24/2011	24.8% detail
Cognizant Technology Solutions Corp (CTSH)	386.4592	23,964.33	17.7%	10/26/2012	19.4% detail
Apple Inc (AAPL)	163.4030	15,392.56	11.4%	10/18/2010	16.7% detail
Chipotle Mexican Grill Inc (CMG)	11.2852	5,085.57	3.8%	08/20/2012	15.3% detail
Fastenal Co (FAST)	173.0150	7,700.90	5.7%	04/20/2015	10.7% detail
Priceline Group Inc (PCLN)	13.9132	17,395.79	12.8%	06/22/2015	1.8% detail
T Rowe Price Group Inc (TROW)	131.6018	9,704.32	7.2%	10/21/2013	-0.3% detail
Air Lease Corp (AL)	321.3814	9,291.14	6.8%	03/17/2014	-12.7% detail
Gilead Science (GILD)	134.2132	11,024.27	8.1%	06/01/2015	-31.3% detail
Skyworks Solution (SWKS)	120.0882	7,541.54	5.6%	09/21/2015	-43.3% detail
VISA Inc (V)	97.2507	7,476.63	5.5%	02/22/2016	NA detail
		135,563.32	100.0%		

AIRR on Investments (excludes cash) = 7.7%

*Calculated return on all investments (excluding cash accounts) during the time span, including those no longer owned on the end date

SE-Michigan Model Club

Transaction History

04/01/2016 to 05/19/2016

Cash Accounts - Income and Expenses

Date	Description	Interest	Misc. Income
04/22/2016	Interest, Folio Investing FDIC Sweep Interest	0.01	
05/13/2016	Unassigned credit, Folio Investing Deposit		0.47
05/13/2016	Unassigned credit, Folio Investing Deposit		0.55
		0.01	1.02

Investment Purchases, Sales, and Transfers

Date	Description	Cost Basis
04/06/2016	Purchased 0.52316 shares Air Lease Corp (AL) at 30.6598 per share	16.04
04/18/2016	Purchased 6.04677 shares Skyworks Solution (SWKS) at 74.4199 per share	450.00
04/18/2016	Purchased 0.97188 shares Chipotle Mexican Grill Inc (CMG) at 463.0201 per share	450.00
05/13/2016	Purchased 1.0204 shares Apple Inc (AAPL) at 90.7095 per share	92.56

Investment Distributions - Cash and Reinvested

Date	Description	Qualified Dividend
04/05/2016	Qualified Dividend, Air Lease Corp (AL)	16.04
05/12/2016	Qualified Dividend, Apple Inc (AAPL)	92.56
		108.60

Investment Splits, Spin-offs and Mergers

Date	Description	New Shares
------	-------------	------------

Member Contributions and Withdrawals

Date	Description	Cash	Units
04/01/2016	4 member payments	450.00	18.952154
04/14/2016	2 member payments EFT	150.55	6.139341
04/15/2016	Payment, Jim Barrett Deposit	20.50	0.835978
04/18/2016	Payment, Mary Jane Bellaver Deposit EFT	50.13	2.044272
04/20/2016	Payment, Gillian Todd Deposit EFT	25.19	1.027234
04/27/2016	Payment, Alex Bodea Deposit EFT	200.12	8.160777
04/29/2016	5 member payments	700.00	28.545593
05/19/2016	5 member payments	246.37	10.693253
		1,842.86	76.398602