



CAPITAL MANAGEMENT CLUB

Agenda

- I. Club Mission & History
- II. Structure & Operations
- III. Performance
- IV. Membership
- V. Contact Information

Section I

Club Mission & History

Origins

- Established in order to supplement undergraduate investment education and to achieve consistent annual returns
- Founded in September 2009
- Club meetings held concurrently with Finance 365: Advanced Investment Management
 - Professor Mark Fedenia acts as faculty advisor

Formation

- Many possibilities were explored
 - Institutional investment accounts
 - Separate individual brokerage accounts
- AUM entirely funded by club members
- Voting allows for equal say from all members
- Two-tier voting procedure mimics top investment firms
 - Ideas filter through collective analyst opinions to elected portfolio managers

Section II

Operations & Structure

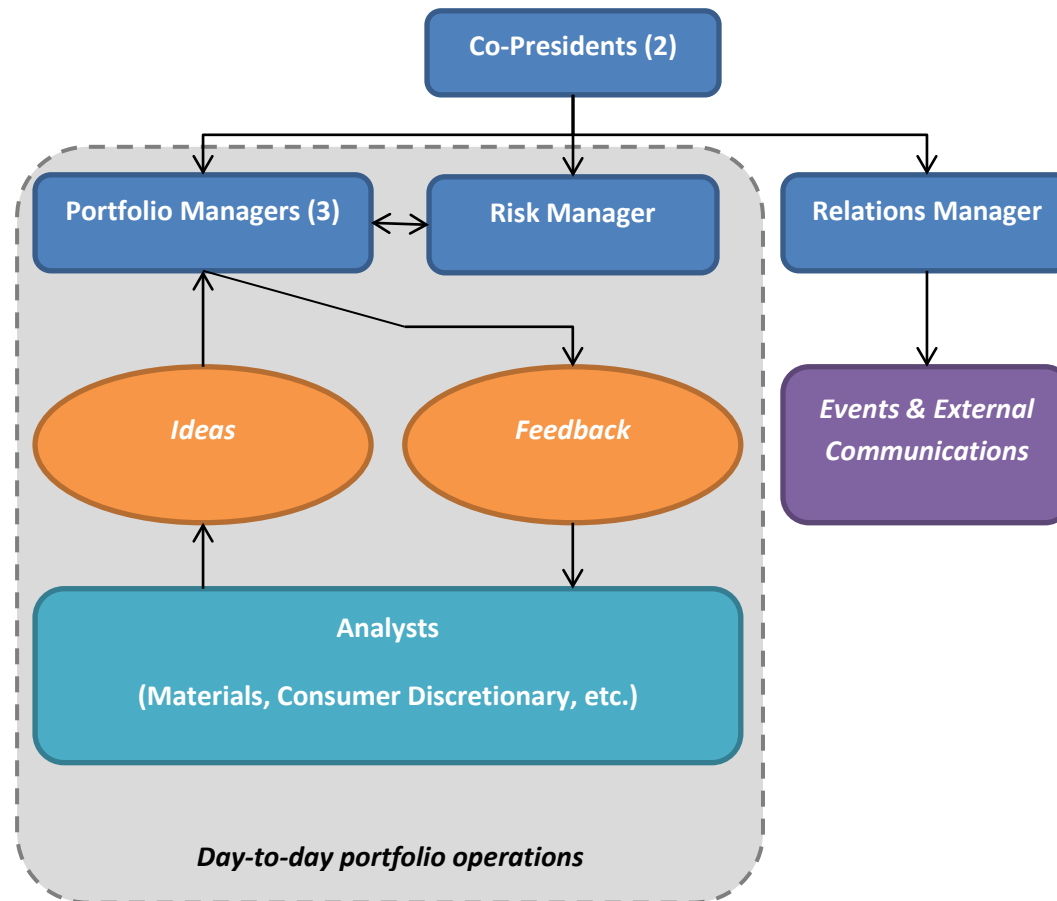
Club Structure: Administrative

- The Capital Management Club is an LLC registered in the state of Wisconsin
- Scottrade is our online brokerage firm
 - \$7.00 a trade + 50 free trades from the outset
- Bivio is our accounting software
 - Provides daily reconciliations with Scottrade including dividends and short interest
 - Keeps track of membership units and allows for easy distributions of capital
 - One click tax form preparation

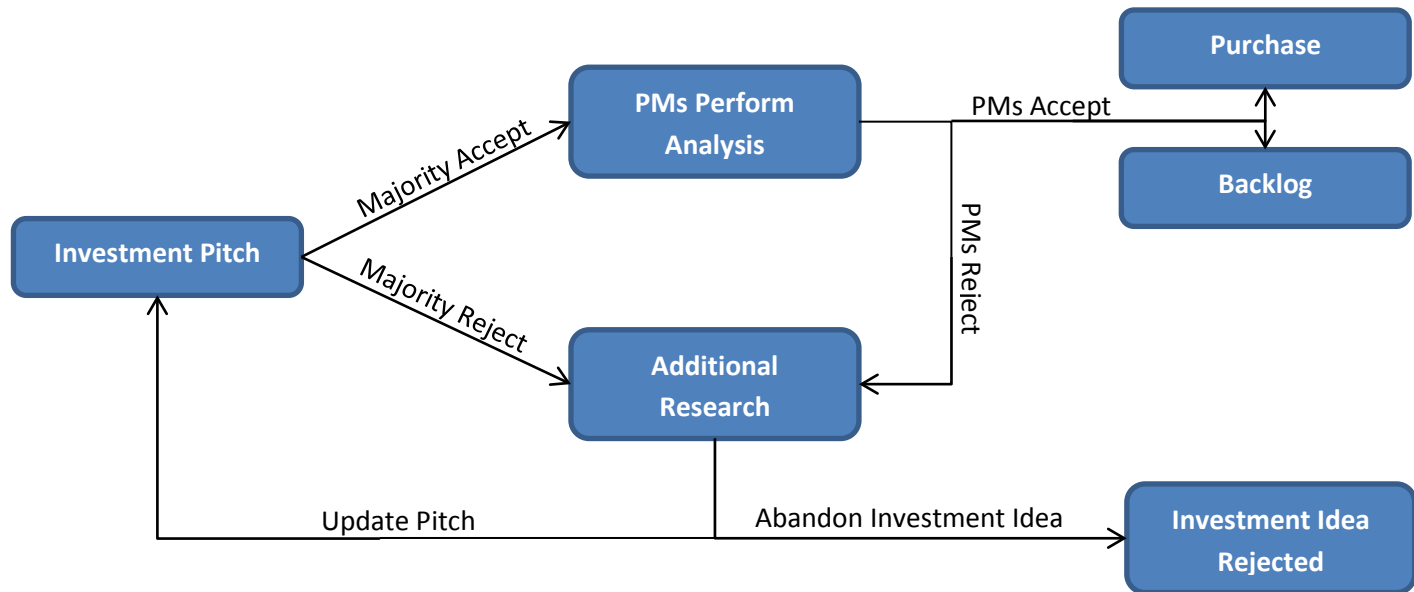
Club Structure: Process

- Adobe Connect Pro is our online meeting software
 - Allows for participation and voting from all current and alumni members wherever they may be
- Courses@bus.wisc.edu is our information repository and communication platform
 - Posting materials, discussion forums, club elections, speaker materials, etc.
- <http://tinyurl.com/uwcmc> is our public web address
- Investment research tools: FactSet, Wisconsin School of Business resources (Bloomberg, OneSource, etc.)

Club Structure: Information Flow



Club Structure: Pitch to Purchase

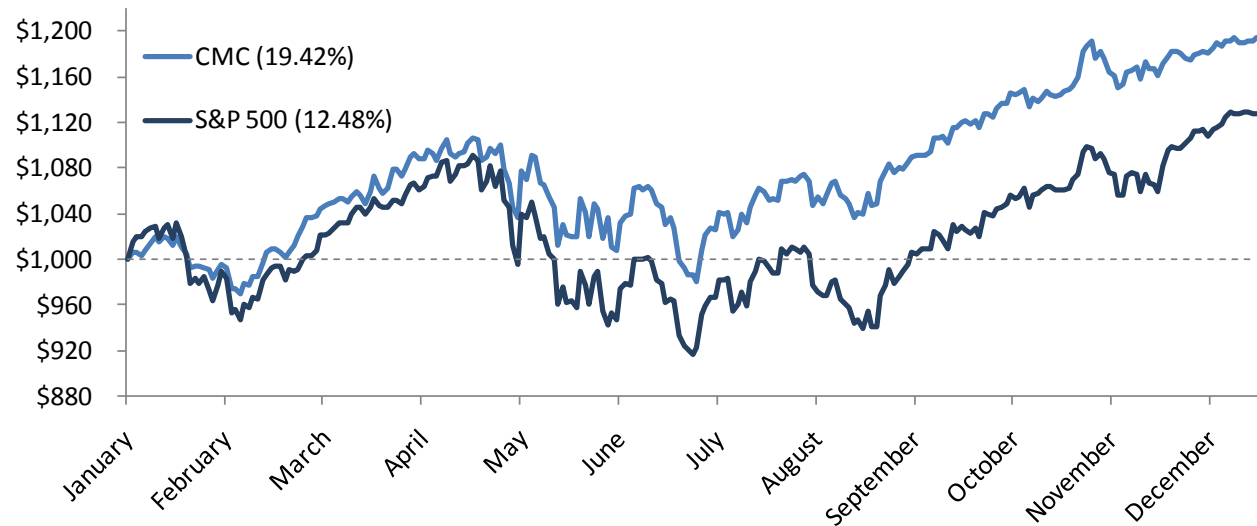


Section III

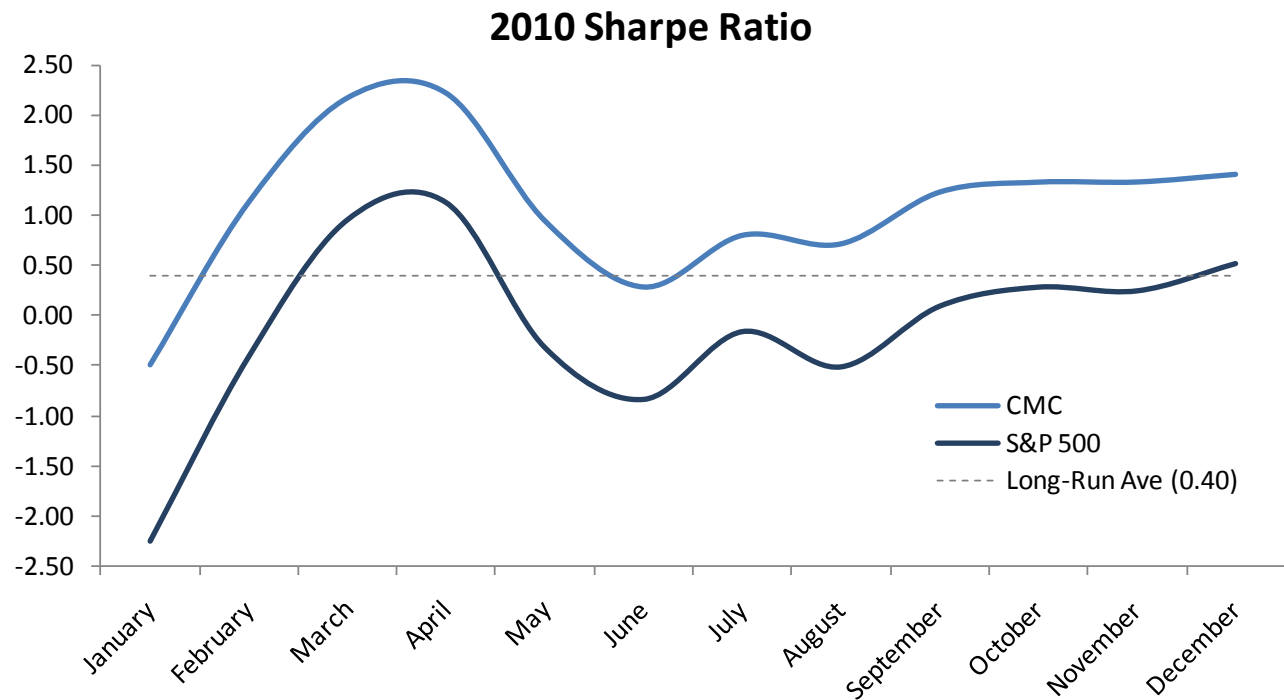
Performance

CMC vs. S&P 500

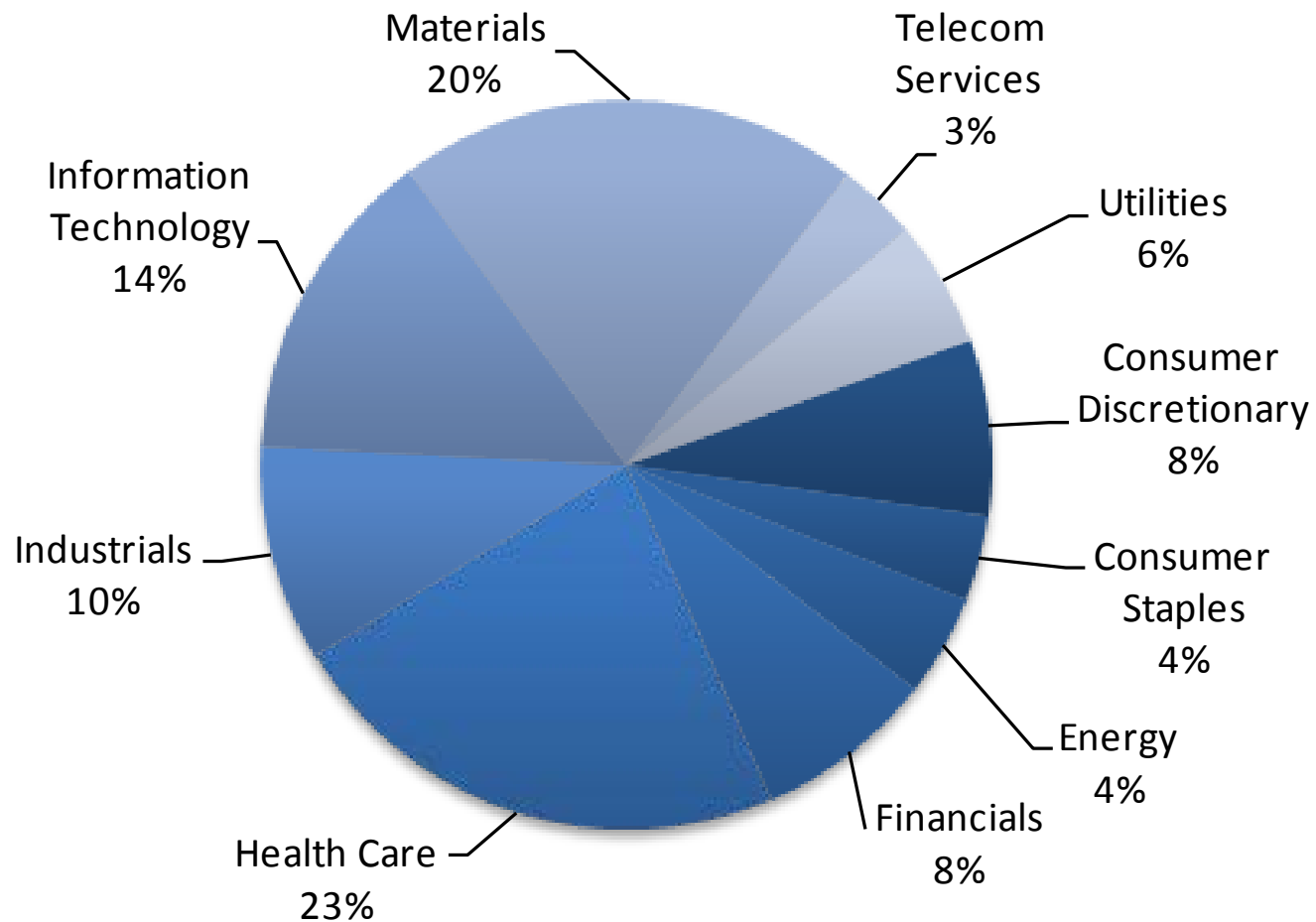
2010 Performance



Sharpe Ratio during 2010



Sector Weightings as of 12/31/10



Current Holdings

Long Book			
Name	Total Cost Basis	Market Value	Percentage Gain/(Loss)
Abbott Laboratories (ABT)	\$ 2,174.64	\$ 2,108.04	-3.06%
Advanced Micro Devices Inc (AMD)	\$ 1,087.37	\$ 1,030.68	-5.21%
CSX Corporation (CSX)	\$ 1,117.60	\$ 1,421.42	27.19%
Exelon Corporation (EXC)	\$ 784.00	\$ 666.24	-15.02%
Express Scripts Inc (ESRX)	\$ 783.00	\$ 972.90	24.25%
Glaxo SmithKline PLC (GSK)	\$ 968.50	\$ 1,019.72	5.29%
K L A - Tencor Corp (KLAC)	\$ 764.98	\$ 888.72	16.18%
Marvell Technology Grp Ltd (MRVL)	\$ 761.52	\$ 704.90	-7.44%
Microsoft Corp (MSFT)	\$ 1,020.34	\$ 948.94	-7.00%
Procter & Gamble Company (PG)	\$ 948.75	\$ 964.95	1.71%
Public Service Enterprise Group Inc (PEG)	\$ 777.84	\$ 763.44	-1.85%
RPM Intl Inc (RPM)	\$ 602.40	\$ 663.00	10.06%
RTI International Metal Inc (RTI)	\$ 1,083.60	\$ 1,160.14	7.06%
Rowan Companies Inc (RDC)	\$ 1,004.52	\$ 1,152.03	14.68%
Sprott Physical Gold Trust (PHYS)	\$ 2,150.45	\$ 2,185.95	1.65%
Tata Motors (TTM)	\$ 828.92	\$ 1,555.02	87.60%
Tradestation Group Inc (TRAD)	\$ 1,638.75	\$ 2,025.00	23.57%
United Parcel Service (UPS)	\$ 805.42	\$ 1,016.12	26.16%
Valeant Pharmaceuticals (VRX)	\$ 1,628.20	\$ 1,697.40	4.25%
Verizon Comm (VZ)	\$ 728.32	\$ 894.50	22.82%
Whole Foods Market (WFMI)	\$ 780.30	\$ 1,517.70	94.50%
Yongye Intl (YONG)	\$ 1,108.80	\$ 1,209.60	9.09%

Current Holdings

Short Book			
Name	Total Cost Basis	Market Value	Percentage Gain/(Loss)
Garmin Ltd. (GRMN)	\$ (1,045.78)	\$ (1,084.65)	-3.72%

Cash Holdings			
Name	Total Cost Basis	Market Value	Percentage Gain/(Loss)
Cash	\$ 17,490.85	\$ 17,490.85	

Realized Gains and Losses

Realized Gains & Losses			
Name	Cost Basis	Sales Price	% Gain/(Loss)
Ameren Corp (AEE)	\$ 814.80	\$ 716.78	-12.03%
Applied Micro (AMCC)	\$ 1,167.99	\$ 1,168.99	0.09%
Ctrip.com (CTRP)	\$ 907.14	\$ 1,269.57	39.95%
Frontier Communications (FTR)	\$ 47.92	\$ 48.79	1.82%
SPDR Gold Shares (GLD)	\$ 780.92	\$ 940.08	20.38%
Green Mountain Coffee Inc (GMCR)	\$ 994.56	\$ 1,459.97	46.80%
Golden Star Resources (GSS)	\$ 815.00	\$ 869.14	6.64%
Iron Mountain Inc (IRM)	\$ 765.60	\$ 909.79	18.83%
OM Group Inc (OMG)	\$ 708.40	\$ 616.98	-12.91%
Pride International Inc (PDE)	\$ 1,007.82	\$ 1,016.64	0.88%
iShares Silver Trust (SLV)	\$ 776.64	\$ 1,411.37	81.73%
iPath S&P 500 VIX (VXX)	\$ 558.04	\$ 712.30	27.64%
Waterstone Financial (WSBF)	\$ 566.25	\$ 1,194.17	110.89%

Pair Trades - Realized Gains & Losses			
Name	Cost Basis	Sales Price	% Gain/(Loss)
FT ISE Revere Natural Gas (FCG)	\$ 850.08	\$ 874.80	2.91%
United States Natural Gas Fund LP (UNG)	\$ 493.40	\$ 807.97	63.76%
Bucyrus Intl (BUCY)	\$ 1,030.24	\$ 936.46	-9.10%
Joy Global Inc (JOYG)	\$ 945.20	\$ 1,064.69	12.64%

Top 10 Performers of 2010

Best Performers of 2010			
Name	Total Cost Basis	Market Value	Percentage Gain/(Loss)
Waterstone Financial (WSBF)	\$ 566.25	\$ 1,194.17	110.89%
Whole Foods Market (WFMI)	\$ 780.30	\$ 1,517.70	94.50%
Tata Motors (TTM)	\$ 828.92	\$ 1,555.02	87.60%
iShares Silver Trust (SLV)	\$ 776.64	\$ 1,411.37	81.73%
United States Natural Gas Fund (UNG)	\$ 493.40	\$ 807.97	63.76%
Green Mountain Coffee (GMCR)	\$ 994.56	\$ 1,459.97	46.80%
Ctrip.com (CTRP)	\$ 907.14	\$ 1,269.57	39.95%
CSX Corporation (CSX)	\$ 1,117.60	\$ 1,421.42	27.19%
United Parcel Service (UPS)	\$ 805.42	\$ 1,016.12	26.16%
Tradestation Group Inc (TRAD)	\$ 1,638.75	\$ 2,025.00	23.57%

Bottom 10 Performers of 2010

Worst Performers of 2010			
Name	Total Cost Basis	Market Value	Percentage Gain/(Loss)
Exelon Corporation (EXC)	\$ 784.00	\$ 666.24	-15.02%
OM Group Inc (OMG)	\$ 708.40	\$ 616.98	-12.91%
Ameren Corp (AEE)	\$ 814.80	\$ 716.78	-12.03%
Marvell Technology Grp Ltd (MRVL)	\$ 761.52	\$ 704.90	-7.44%
Microsoft Corp (MSFT)	\$ 1,020.34	\$ 948.94	-7.00%
Advanced Micro Devices Inc (AMD)	\$ 1,087.37	\$ 1,030.68	-5.21%
Garmin Ltd. (GRMN)	\$ (1,045.78)	\$ (1,084.65)	-3.72%
Abbott Laboratories (ABT)	\$ 2,174.64	\$ 2,108.04	-3.06%
Public Service Enterprise Group (PEG)	\$ 777.84	\$ 763.44	-1.85%
Applied Micro (AMCC)	\$ 1,167.99	\$ 1,168.99	0.09%

Section IV

Membership

Recruitment

- Recruit members of all classes and majors
 - Aim to create “classes” of students who will follow a pre-defined curriculum of club work and formal class work
- Candidates are asked to submit a resume and a brief statement of interest
- Finalists are interviewed and asked to pitch a stock to the executive board
- Members are required to invest at least \$100
- Current Membership:

Academic Class of Members		
Freshman	1	2%
Sophomore	10	21%
Junior	18	38%
Senior	18	38%
Total	47	100%

Placement

- Members of last year's class placed at the following firms:

Alumni Placement		
Firm	Division	City
Axiom International Investor	Asset Management	Greenwich
BlackRock	Asset Management	Wilmington
BMO Capital Markets	Investment Banking	Chicago
Consolidated Trading	Proprietary Trading	Chicago
Deutsche Bank	Investment Banking	New York
Edward Jones	Private Wealth Mgmt.	Madison
Goldman Sachs	Investment Banking	New York
J.P. Morgan	Private Wealth Mgmt.	Milwaukee
Morgan Stanley	Equity Research	New York

Section V

Contact Information

Contact Information

Name	Title	Email	Phone
William Graf	Co-President	wgraf@wisc.edu	608.772.2455
Andrew Quinn	Co-President	aquinn@wisc.edu	262.501.7869
Sam Curley	Portfolio Manager	scurley@wisc.edu	262.930.5596
Alex Kreindler	Portfolio Manager	kreindler@wisc.edu	617.875.2902
Brandon Winikates	Portfolio Manager	winikates@wisc.edu	262.914.2872
Tyler Strong	Risk Manager	ttstrong@wisc.edu	414.202.7396
Meg Baptie	Relations Manager	baptie@wisc.edu	262.993.1627
Aaron Pollock	Founding Member	ampollock@wisc.edu	703.967.8170
Mark Fedenia	Faculty Advisor	mfedenia@wisc.edu	608.695.5546